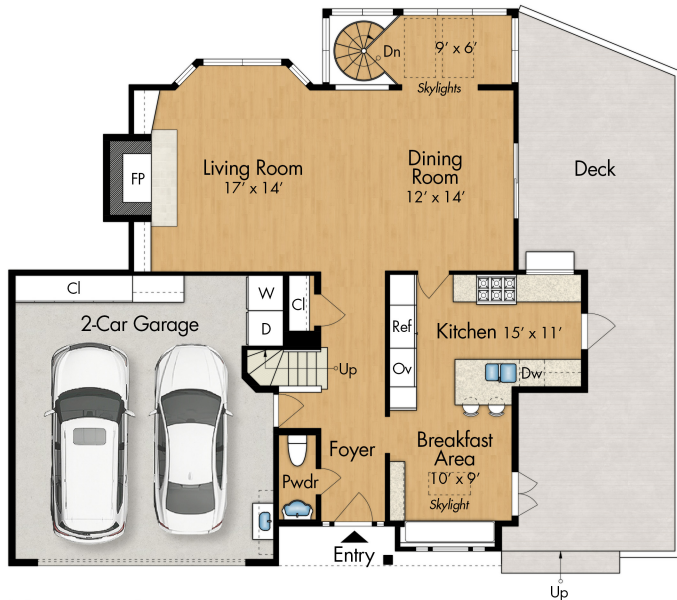
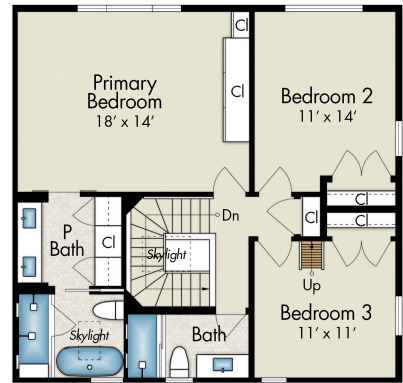


# 2400 VISTA DEL MAR LN

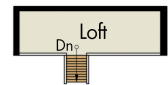
TIBURON, CA 94920



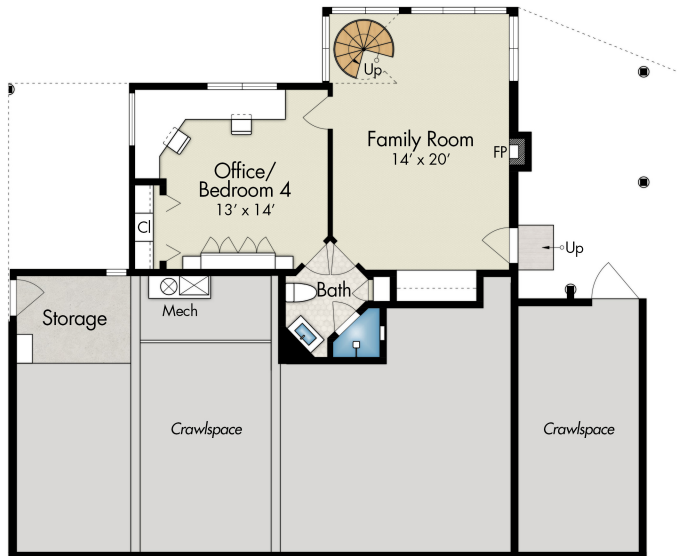
**Main Level** 994 SQ FT  
Plus Garage: 471 SQ FT



**Upper Level** 886 SQ FT



**Loft (Bedroom 3)**  
45 SQ FT



**Lower Level** 615 SQ FT  
Plus Storage: 63 SQ FT

**ESTIMATED TOTAL FINISHED SQUARE FOOTAGE:**  
2,495 SQ FT

Above grade: 1,880 SQ FT  
Below grade: 615 SQ FT  
Plus 471 SQ FT Garage (Main Level)  
Plus 45 SQ FT Loft (Bedroom 3)  
Plus 63 SQ FT Loft (Lower Level)

Calculated per ANSI Standard Z765-2003  
Estimated Total Finished and Unfinished Square Footage:  
3,074 SQ FT



