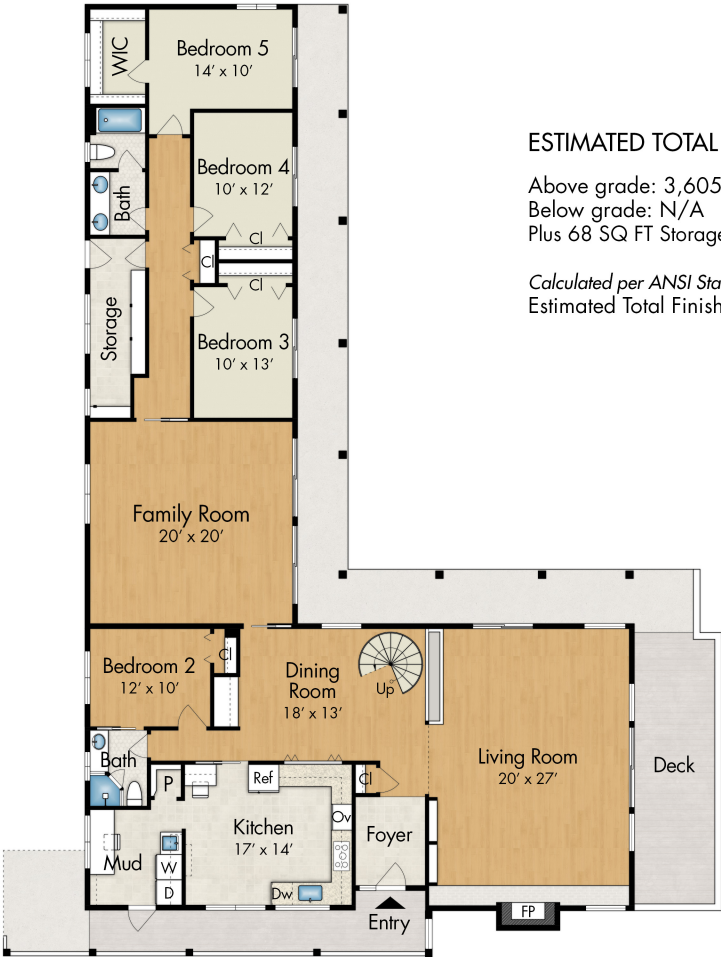
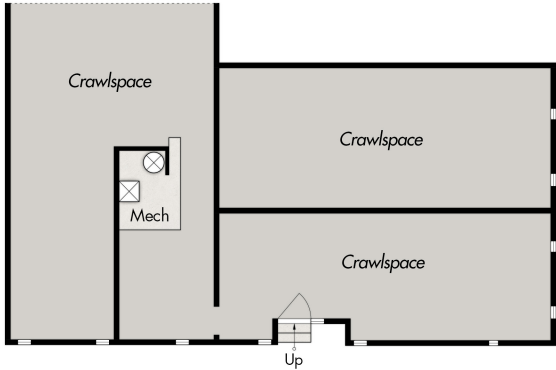


81 MOUNT TIBURON RD

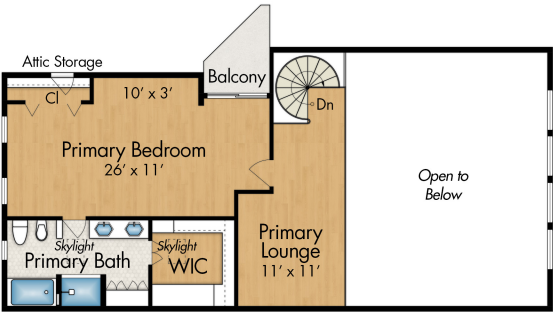
TIBURON, CA 94920



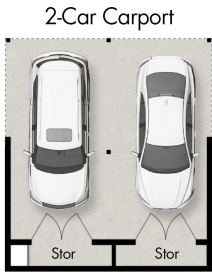
Main Level 2,815 SQ FT



Basement Level



Upper Level 790 SQ FT



Detached Carport
Storage: 68 SQ FT



ESTIMATED TOTAL FINISHED SQUARE FOOTAGE: 3,605 SQ FT

Above grade: 3,605 SQ FT
Below grade: N/A
Plus 68 SQ FT Storage (Detached Carport)

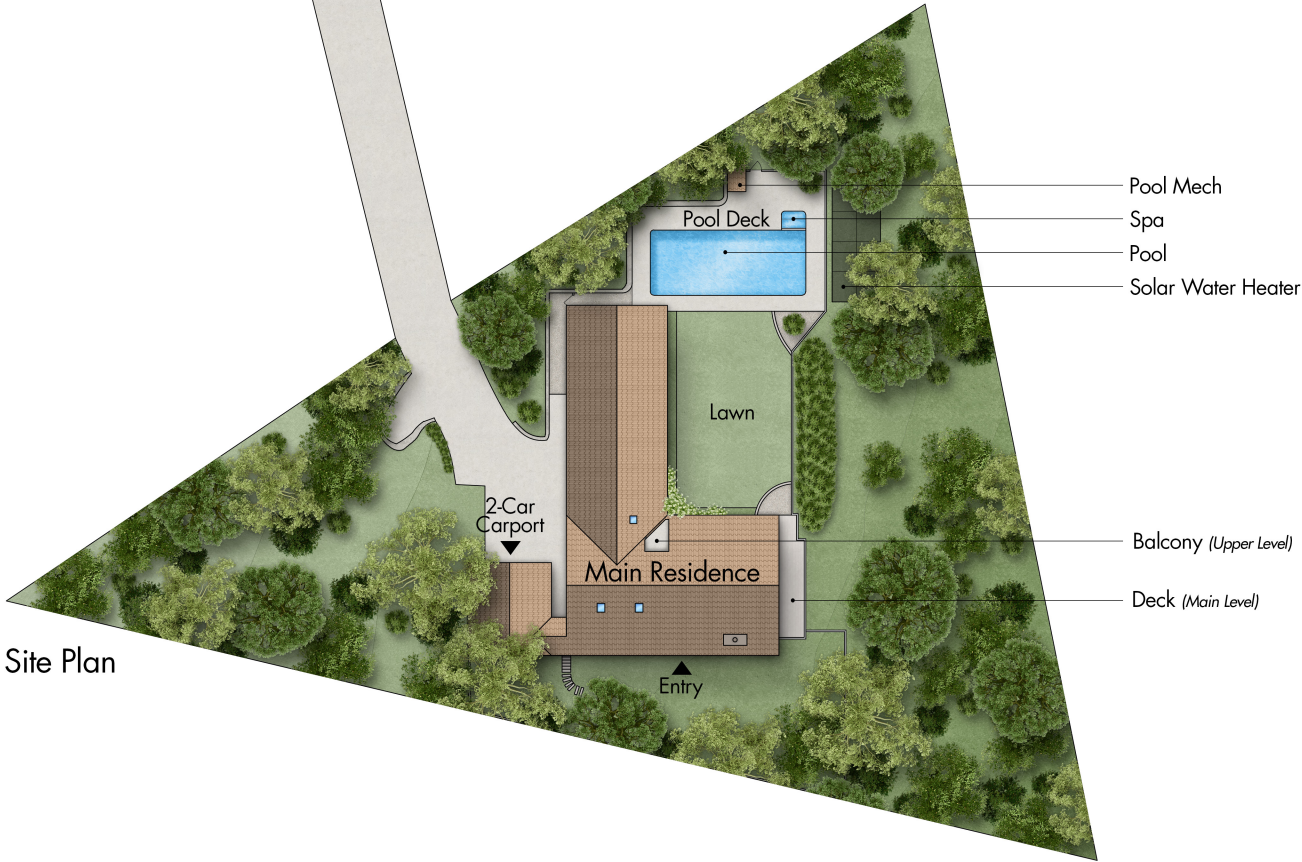
Calculated per ANSI Standard Z765-2003
Estimated Total Finished and Unfinished Square Footage: 3,673 SQ FT

Tiburon Road

81 MOUNT TIBURON RD
T I B U R O N , C A 9 4 9 2 0



Driveway



Site Plan

The measurements provided herein, though highly accurate are approximate and should be independently verified.