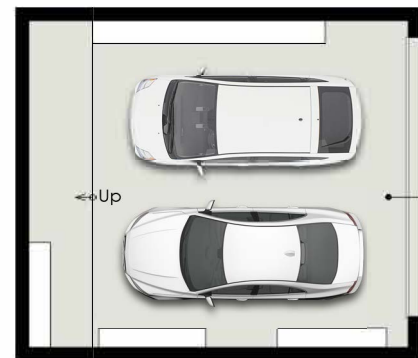
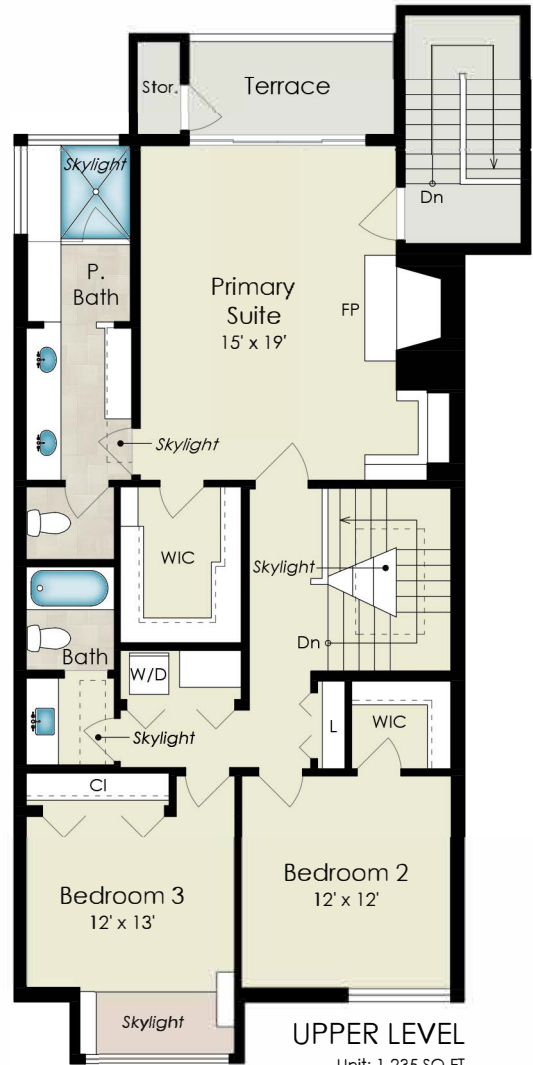




1916 MAR WEST STREET

TIBURON, CA 94920



Estimated Total Square Footage: 2,420 SQ FT

Calculated from outside face of exterior walls and center line of demising walls.

Plus 435 SQ FT Detached 2-Car Garage
 Plus 45 SQ FT Storage
 Plus 190 SQ FT Common Stairs