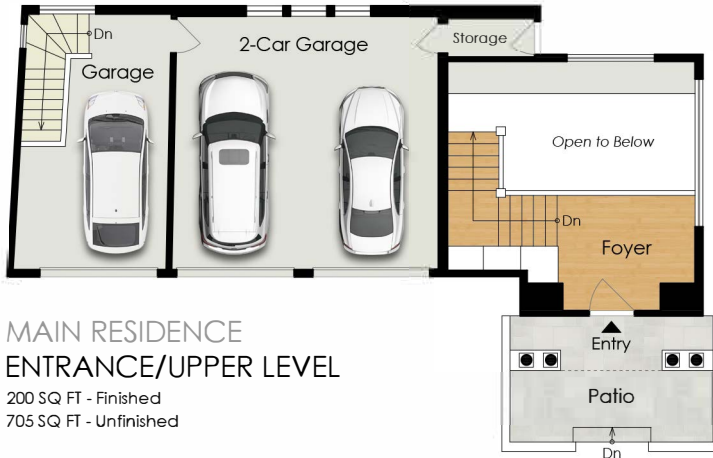


205 GOLDEN GATE AVENUE

BELVEDERE, CA 94920



MAIN RESIDENCE ENTRANCE/UPPER LEVEL

200 SQ FT - Finished
705 SQ FT - Unfinished

Estimated Total Finished
Square Footage: 5,795 SQ FT

Above-Grade: 3,650 SQ FT Below-Grade: 2,315 SQ FT

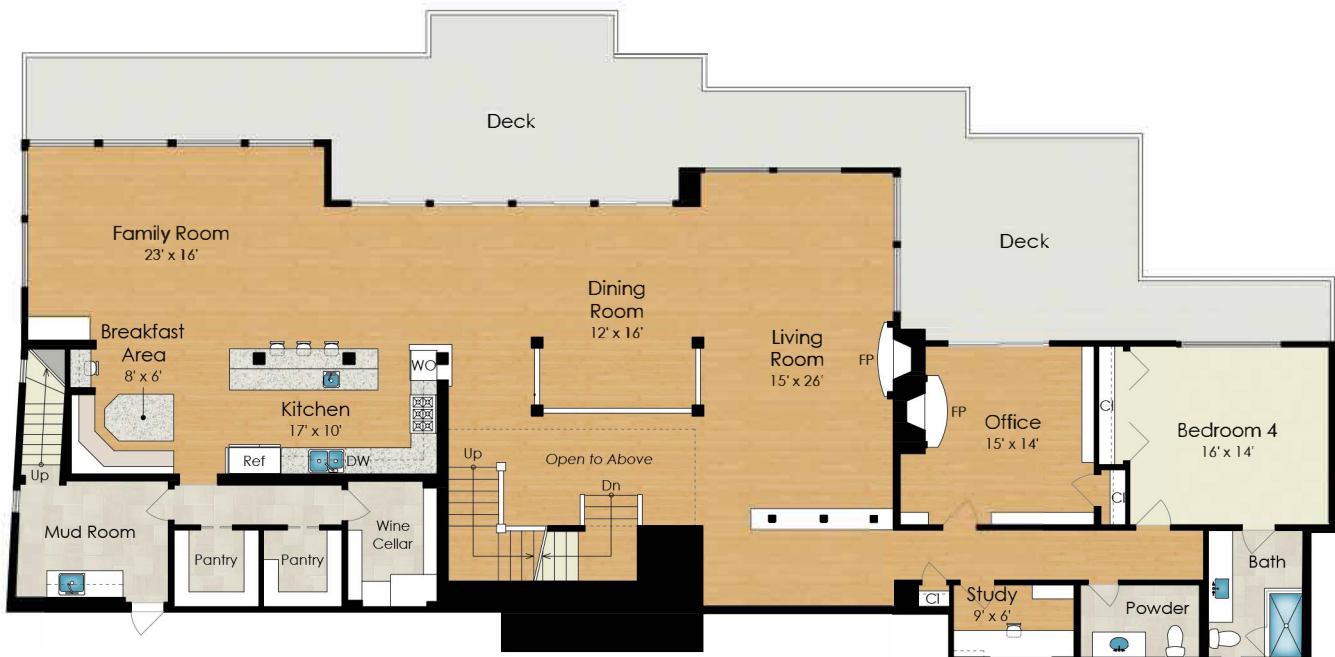
- Main Residence: 5,535 SQ FT

Main Level: 3,190 SQ FT
Entrance/Upper Level: 200 SQ FT Lower
Level: 2,145 SQ FT

- Pool House: 260 SQ FT

Plus 705 SQ FT 2-Car Garage on Entrance/Upper Level
Plus 30 SQ FT Mech Room on Lower Level
Calculated per ANSI Standard Z765-2021

* Estimated Total Finished & Unfinished
Square Footage: 6,700 SQ FT



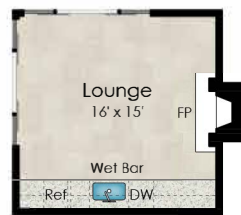
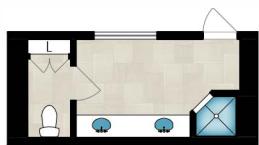
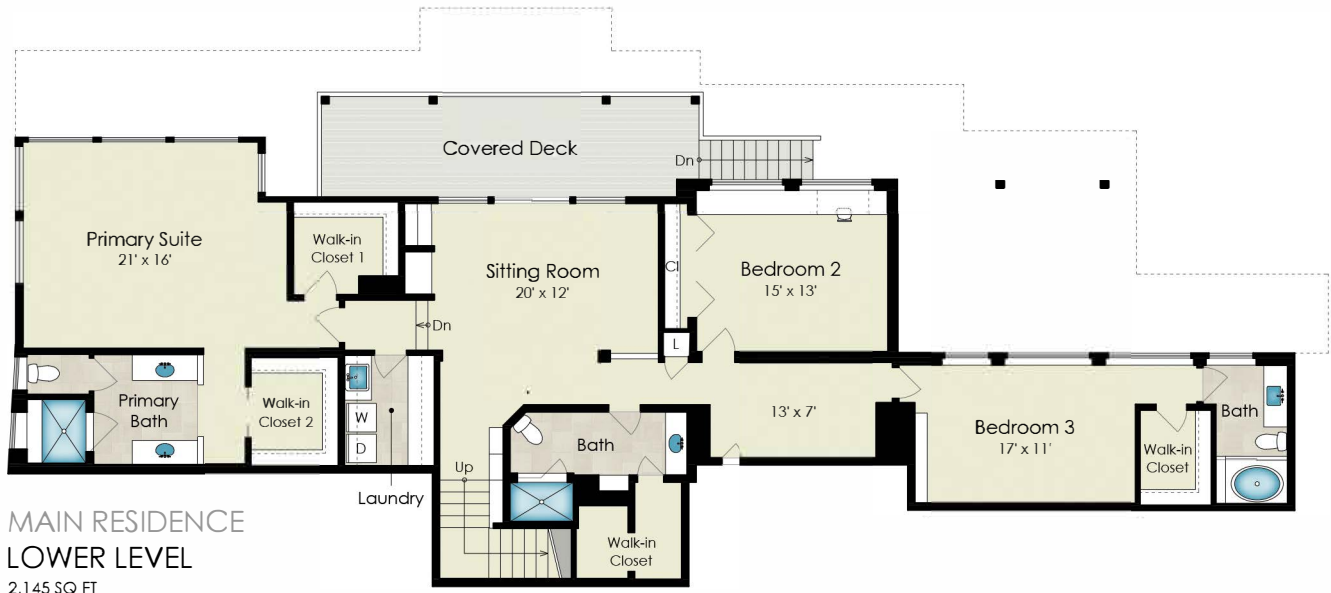
MAIN RESIDENCE MAIN LEVEL

3,190 SQ FT



205 GOLDEN GATE AVENUE

BELVEDERE, CA 94920



205 GOLDEN GATE AVENUE

BELVEDERE, CA 94920



SITE PLAN