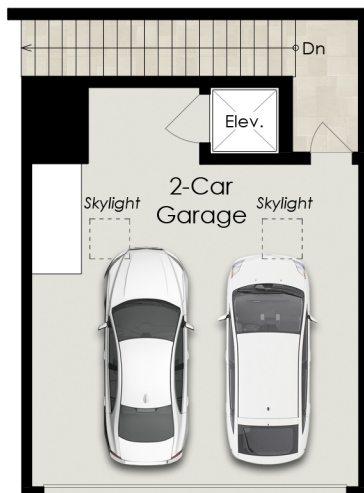




1940 STRAITS VIEW DRIVE

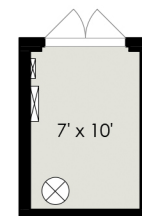
TIBURON, CA 94920



Estimated Total Finished
Square Footage: 5,520 SQ FT

Above-Grade: 2,750 SQ FT Below-Grade: 2,770 SQ FT
Plus 475 SQ FT 2-Car Garage on Upper Level
Plus 205 SQ FT Storage & Water Tanks on Lower Level 2
Plus 85 SQ FT Pool Equipment Room (Below Pool)
Calculated per ANSI Standard Z765-2003.

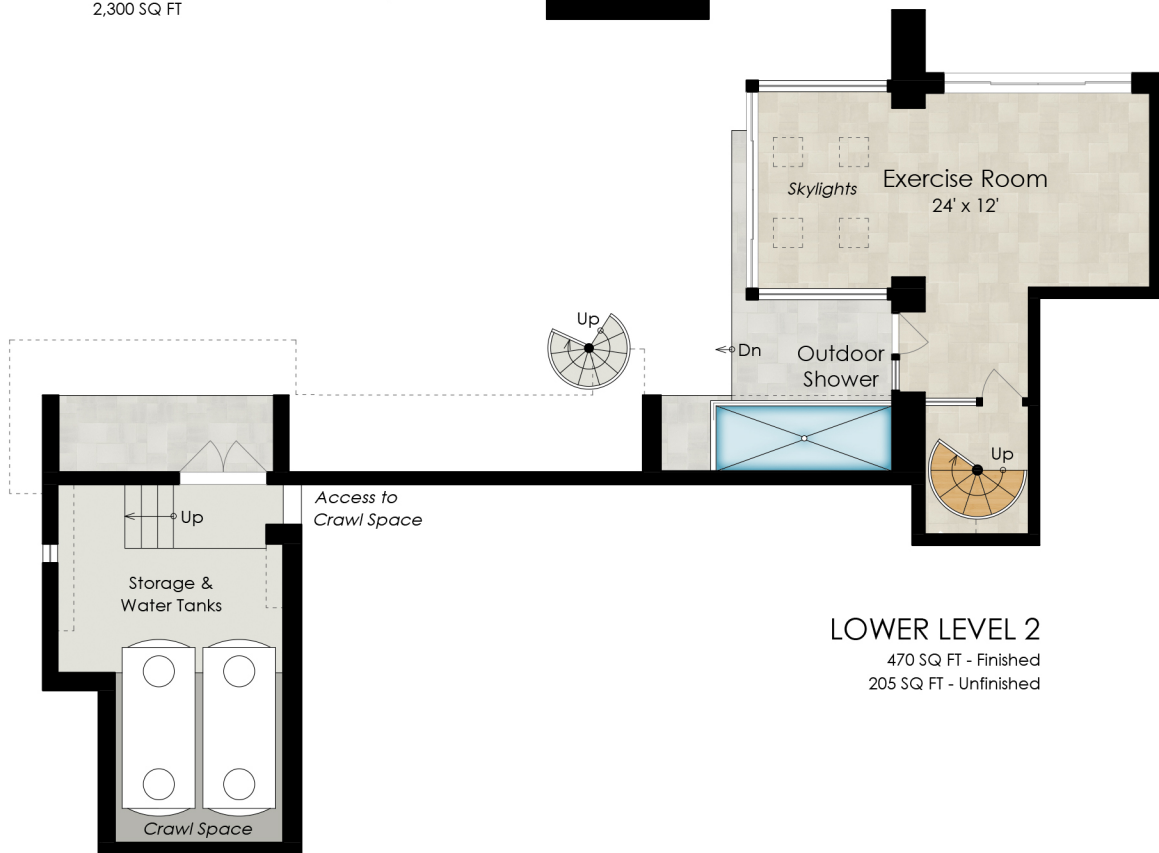
* Estimated Total Finished & Unfinished Square Footage: 6,285 SQ FT





1940 STRAITS VIEW DRIVE

TIBURON, CA 94920



1940 STRAITS VIEW DRIVE

TIBURON, CA 94920

