



# 22 EUCALYPTUS ROAD

BELVEDERE, CA 94920

Partial Lot Shown

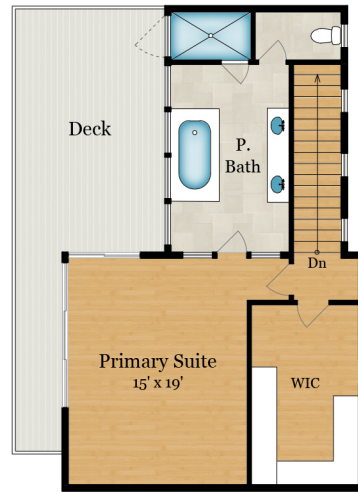






# 22 EUCALYPTUS ROAD

BELVEDERE, CA 94920



**MAIN RESIDENCE  
UPPER LEVEL**  
795 SQ FT



**GUEST SUITE  
(BELOW GARAGE)**  
315 SQ FT

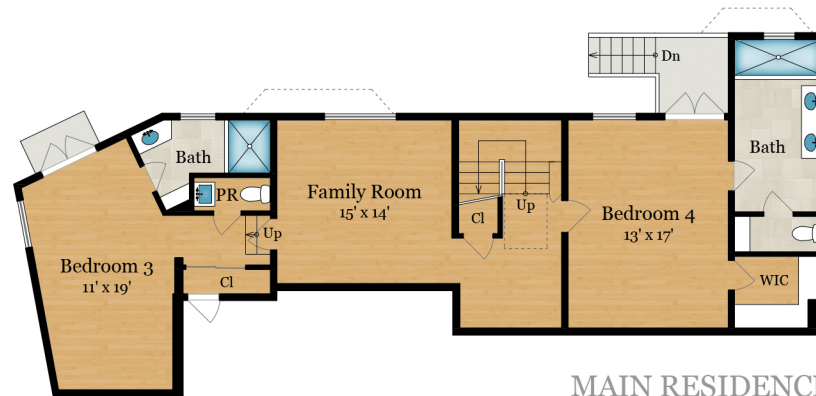
**Estimated Total Finished  
Square Footage: 4,480 SQ FT**

Above-Grade: 3,270 SQ FT Below-Grade: 1,210 SQ FT

- **Main Residence: 4,165 SQ FT**  
Main Level: 2,160 SQ FT  
Upper Level: 795 SQ FT  
Lower Level: 1,210 SQ FT
- **Guest Suite: 315 SQ FT**

Plus 485 SQ FT Detached 2-Car Garage  
Calculated per ANSI Standard Z765-2003.

\* Estimated Total Finished & Unfinished  
Square Footage: 4,965 SQ FT



**MAIN RESIDENCE  
LOWER LEVEL**  
1,210 SQ FT

# 22 EUCALYPTUS ROAD

BELVEDERE, CA 94920

## SITE PLAN

