

1 TOWER POINT LANE

TIBURON, CA 94920



1 TOWER POINT LANE

TIBURON, CA 94920

Estimated Total Finished Square Footage: 2,945 SQ FT

Above-Grade: N/A Below-Grade: 2,945 SQ FT

Plus 650 SQ FT 2-Car Garage on Main Level

Plus 140 SQ FT Mech Room on Lower Level

Plus 250 SQ FT Storage on Lower Level

Calculated per ANSI Standard Z765-2003.

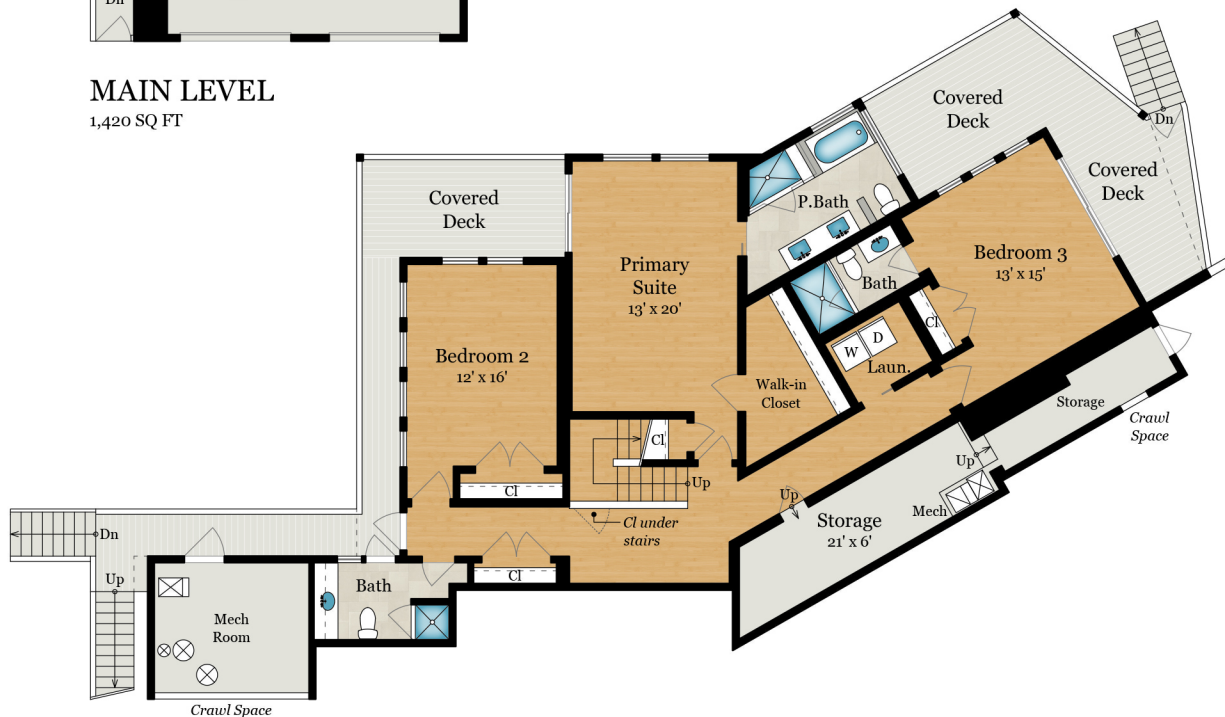
* Estimated Total Finished & Unfinished

Square Footage: 3,985 SQ FT



MAIN LEVEL

1,420 SQ FT



LOWER LEVEL

1,525 SQ FT

