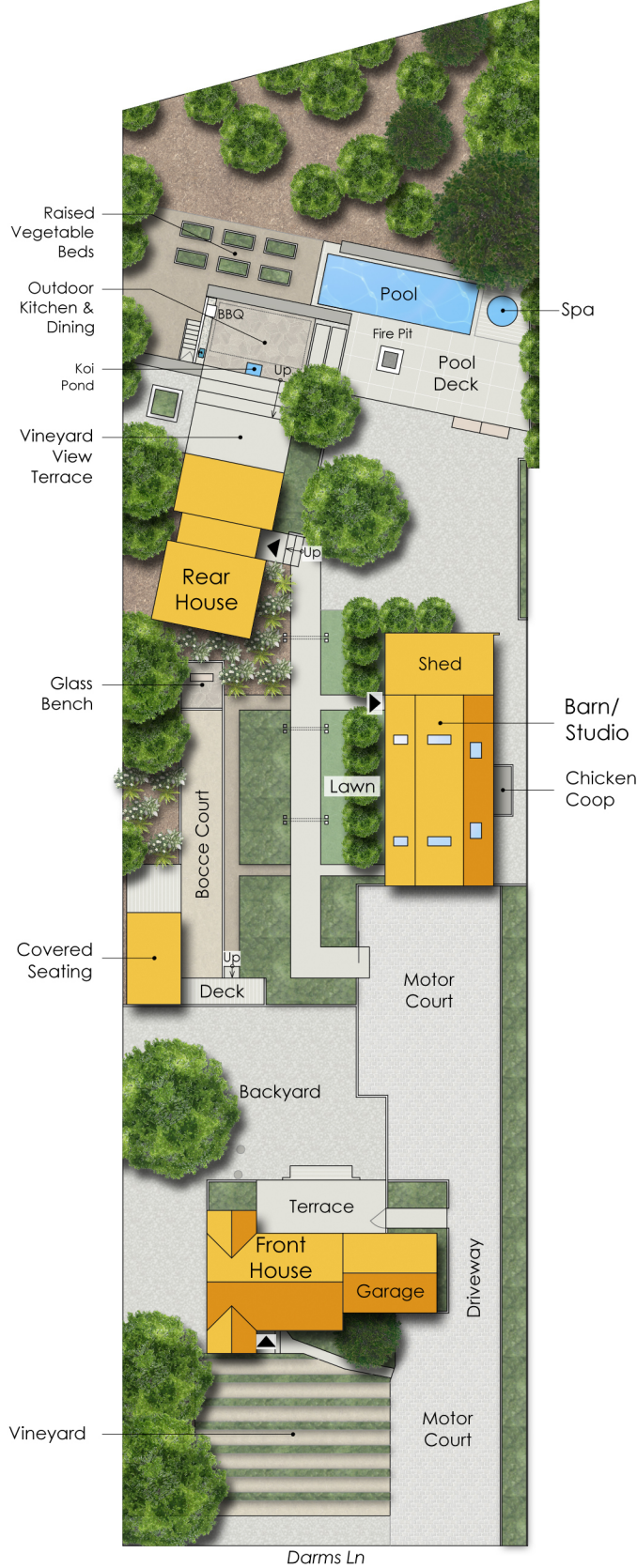


1067-1069 DARMS LANE

NAPA, CA 94558



SITE PLAN



Estimated Total Finished Square Footage: 4,895 SQ FT

Above-Grade: 4,895 SQ FT Below-Grade: N/A

- Front House: 1,195 SQ FT
- Rear House: 1,120 SQ FT
- Barn/Studio: 2,580 SQ FT

Plus 390 SQ FT Garage (Main Residence)
Calculated per ANSI Standard Z765-2003.

* Estimated Total Finished & Unfinished
Square Footage: 5,285 SQ FT



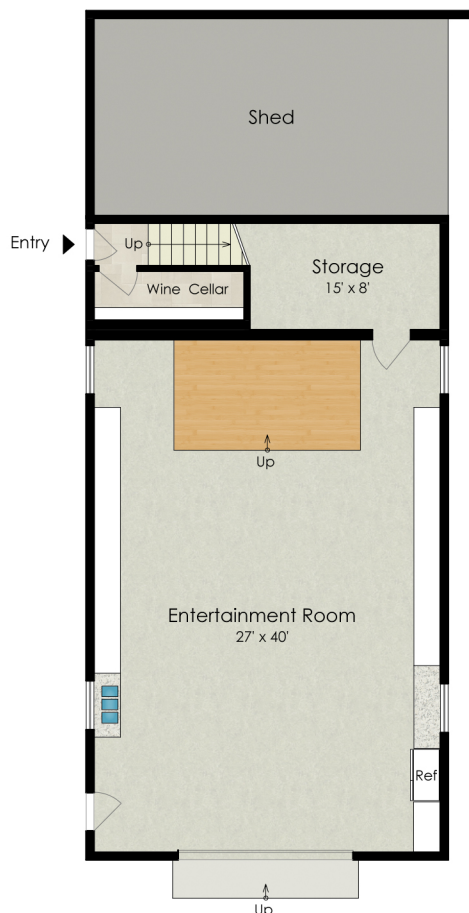
FRONT HOUSE

1,195 SQ FT



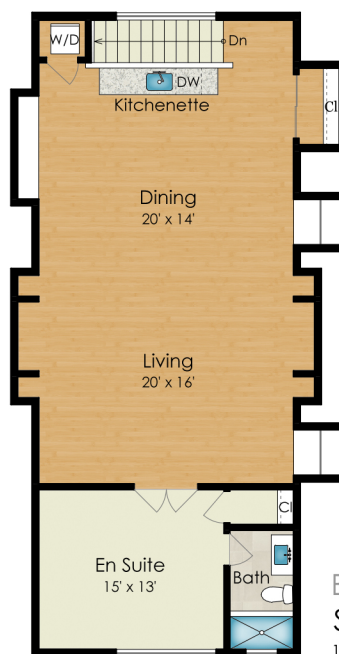
REAR HOUSE

1,120 SQ FT



BARN
FIRST FLOOR

1,420 SQ FT



BARN/STUDIO
SECOND FLOOR

1,160 SQ FT





1067-1069 DARMS LANE

NAPA, CA 94558



FRONT HOUSE

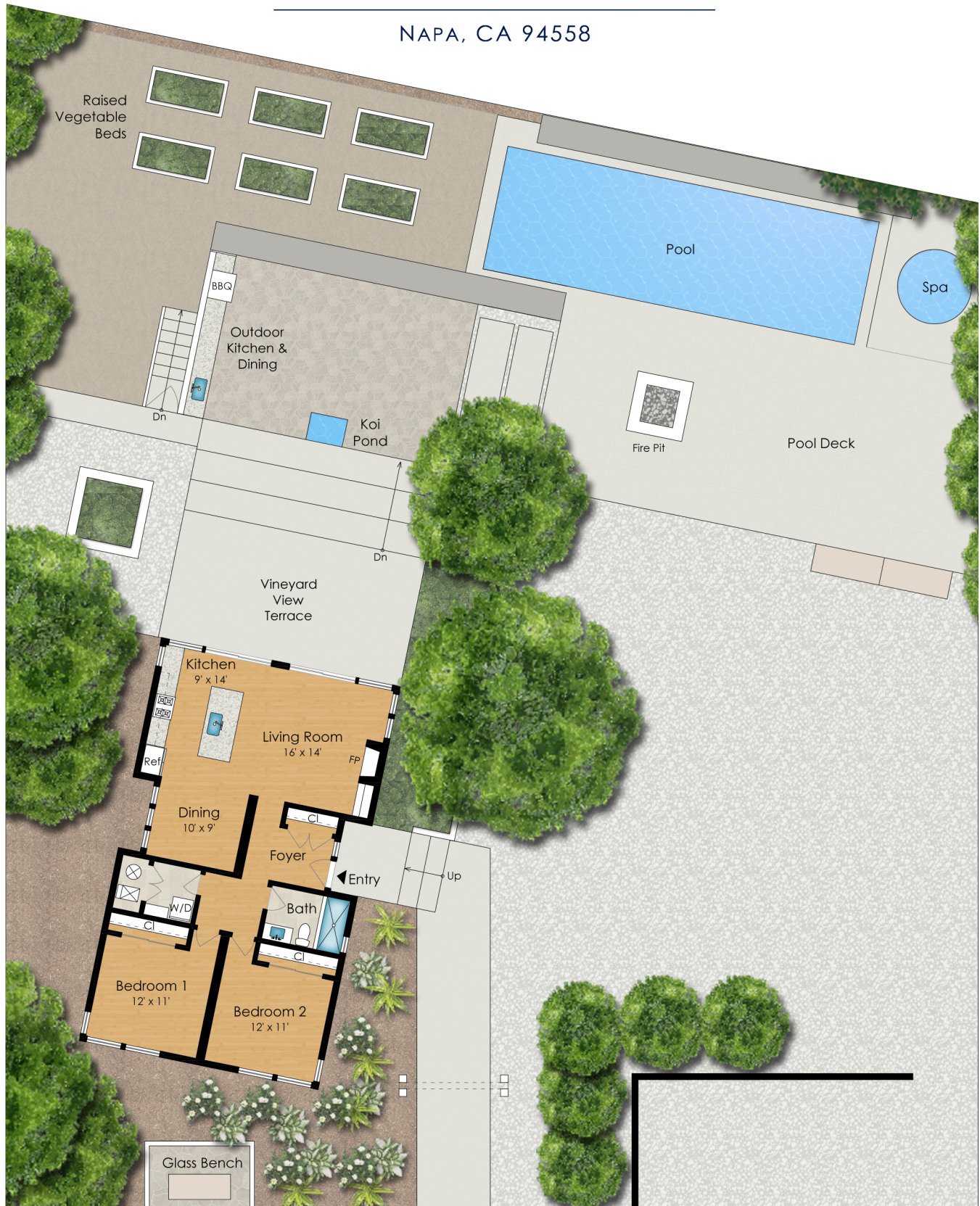
1,195 SQ FT

Darms Ln

Partial Lot Shown

1067-1069 DARMS LANE

NAPA, CA 94558



REAR HOUSE

1,120 SQ FT

Partial Lot Shown

1067-1069 DARMS LANE

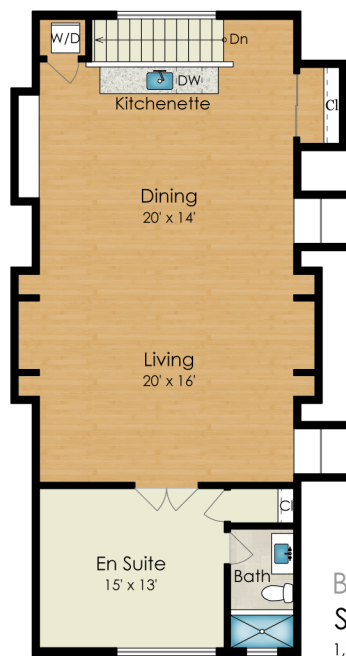
NAPA, CA 94558

Estimated Total Finished
Square Footage: 4,895 SQ FT
Above-Grade: 4,895 SQ FT Below-Grade: N/A

- Front House: 1,195 SQ FT
- Rear House: 1,120 SQ FT
- Barn/Studio: 2,580 SQ FT

Plus 390 SQ FT Garage (Front House)
Calculated per ANSI Standard Z765-2003.

* Estimated Total Finished & Unfinished
Square Footage: 5,285 SQ FT



BARN/STUDIO
SECOND FLOOR
1,160 SQ FT



Partial Lot Shown