



California Lifestyle Collection

Magnificent Mansion Over Downtown Sausalito Bridgeway Sausalito, California



7 Beds | 6 Baths | 1 Half-Bath

Magnificent mansion over downtown Sausalito Bridgeway with ±10,783 sq. ft., 7 bedroom, 6.5 baths on 0.7645 acre lot features Italian marble floors, French painted ceilings, grand staircase, gourmet kitchen, elevators to all floors, 4-car garage, pool with steam shower and sauna, exercise room, spacious wine cellar, lush gardens, multiple terraces to enjoy the panoramic views of entire San Francisco skyline, Bay Bridge,

Offered at \$22,500,000

Angel Island, Belvedere Island, Tiburon and East Bay. Extreme high quality custom built for current owner, construction took four years completed in 2000. Great Banana Belt weather protected from wind and fog. Walking distance to downtown Sausalito's Ferry, restaurants and stores. This is a rare chance to own the finest home in Sausalito.

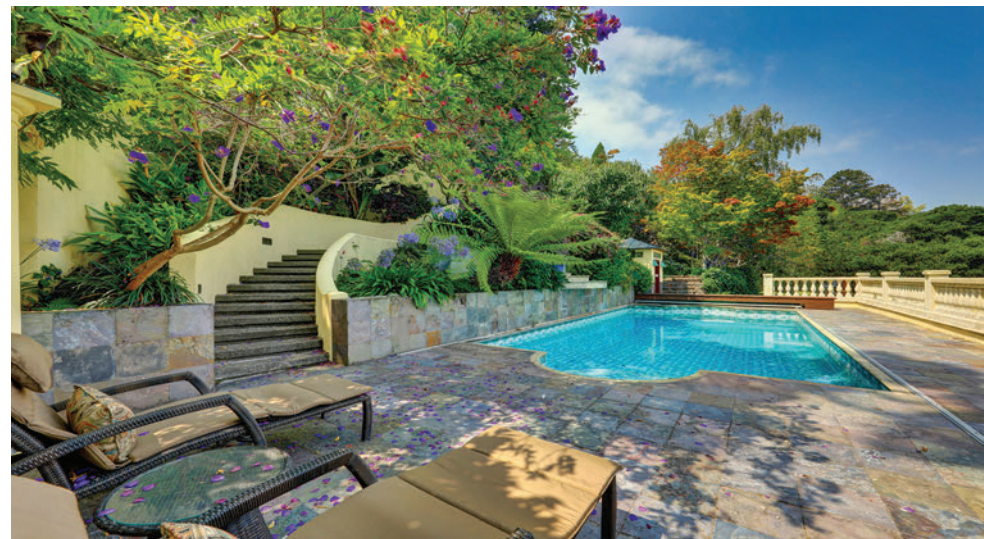
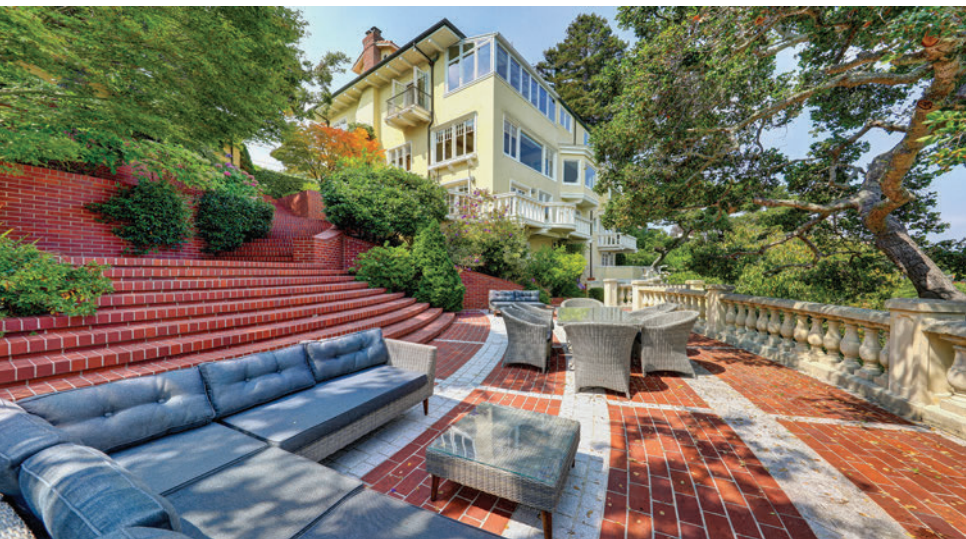
Details and photos at 6BulkleySausalito.com



California Lifestyle Collection

Magnificent Belvedere Island Italianate Villa

Belvedere, California



Olivia Hsu Decker | [SanFranciscoFineHomes.com](https://www.SanFranciscoFineHomes.com)

Cell: 415.720.5915 | Olivia@SanFranciscoFineHomes.com | Lic.# 00712080

Golden Gate | Sotheby's
INTERNATIONAL REALTY