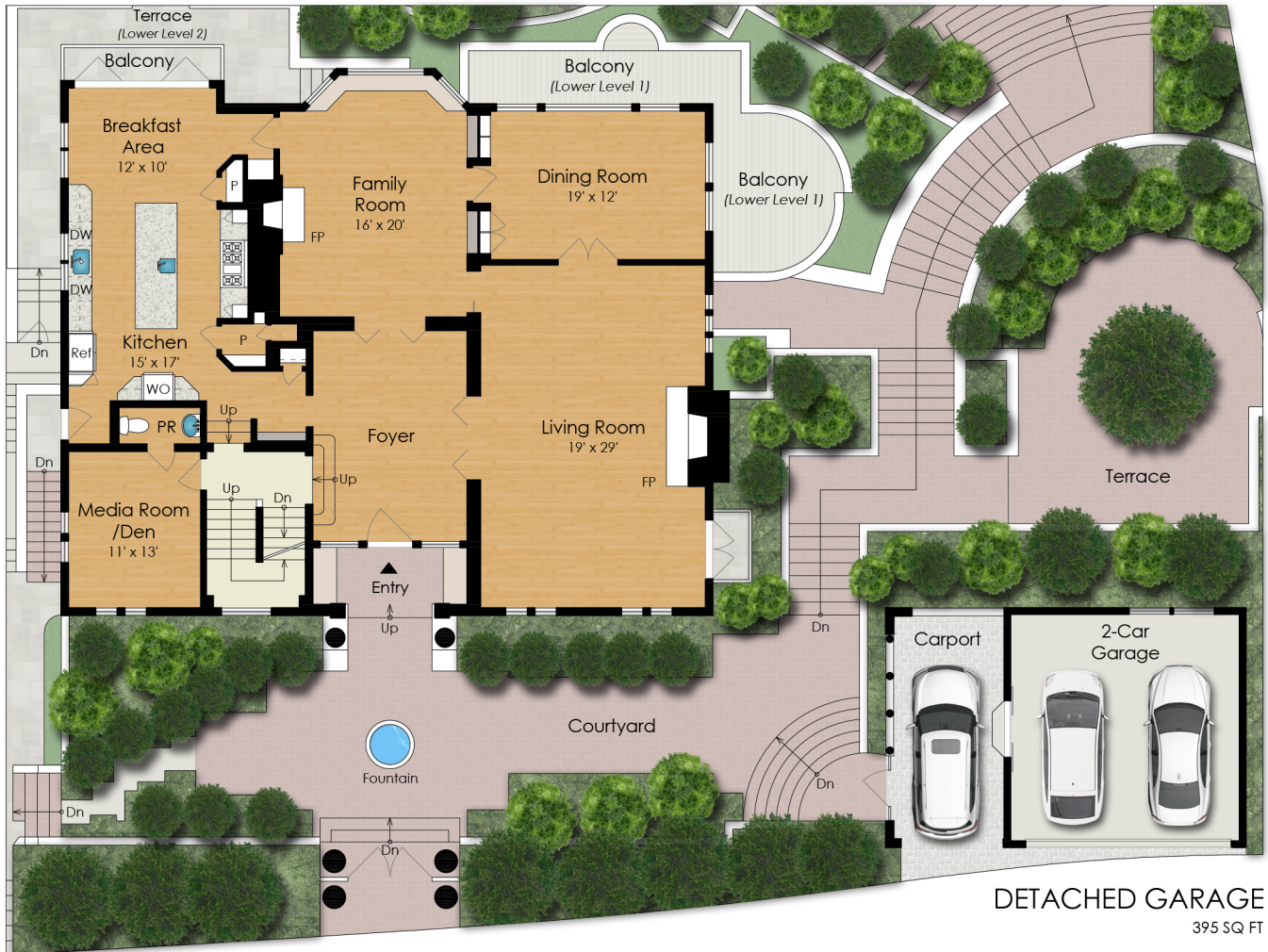


# 308 GOLDEN GATE AVENUE

BELVEDERE, CA 94920



**DETACHED GARAGE**  
395 SQ FT

## MAIN RESIDENCE

### MAIN LEVEL

2,270 SQ FT

### Estimated Total Finished

**Square Footage: 7,695 SQ FT**

Above-Grade: 5,515 SQ FT Below-Grade: 2,180 SQ FT

- **Main Residence: 7,645 SQ FT**

- Main Level: 2,270 SQ FT
- Upper Level 1: 2,270 SQ FT
- Upper Level 2: 975 SQ FT
- Lower Level 1: 1,875 SQ FT
- Lower Level 2: 255 SQ FT

- **Pool Bath: 50 SQ FT**

Plus 395 SQ FT Detached 2-Car Garage  
 Plus 405 SQ FT Storage on Lower Level 1  
 Plus 430 SQ FT Storage on Lower Level 2  
 Plus 165 SQ FT Storage on Lower Level 3  
 Calculated per ANSI Standard Z765-2003.

\*Estimated Total Finished & Unfinished Square Footage: 9,090 SQ FT



**MAIN RESIDENCE**  
**UPPER LEVEL 1**

2,270 SQ FT

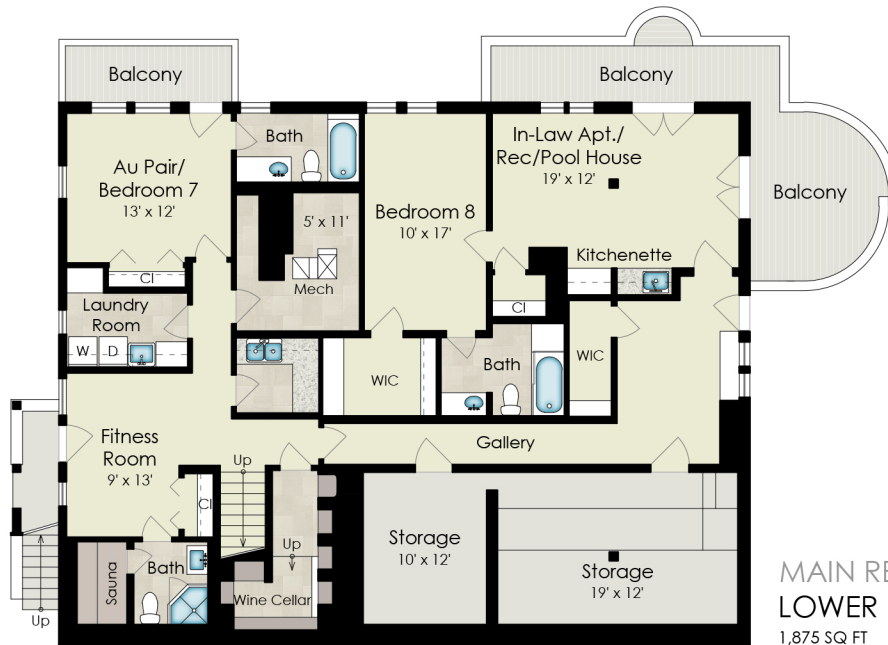


# 308 GOLDEN GATE AVENUE

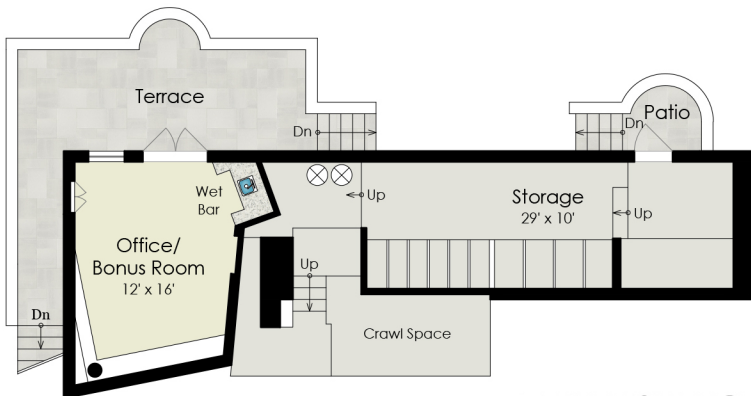
BELVEDERE, CA 94920



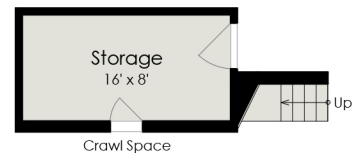
MAIN RESIDENCE  
UPPER LEVEL 2  
975 SQ FT



MAIN RESIDENCE  
LOWER LEVEL 1  
1,875 SQ FT



MAIN RESIDENCE  
LOWER LEVEL 2  
255 SQ FT - Finished  
430 SQ FT - Unfinished



MAIN RESIDENCE  
LOWER LEVEL 3  
165 SQ FT - Unfinished



POOL BATH  
50 SQ FT



# 308 GOLDEN GATE AVENUE

BELVEDERE, CA 94920

