

4 PARK PLACE

TIBURON, CA 94920

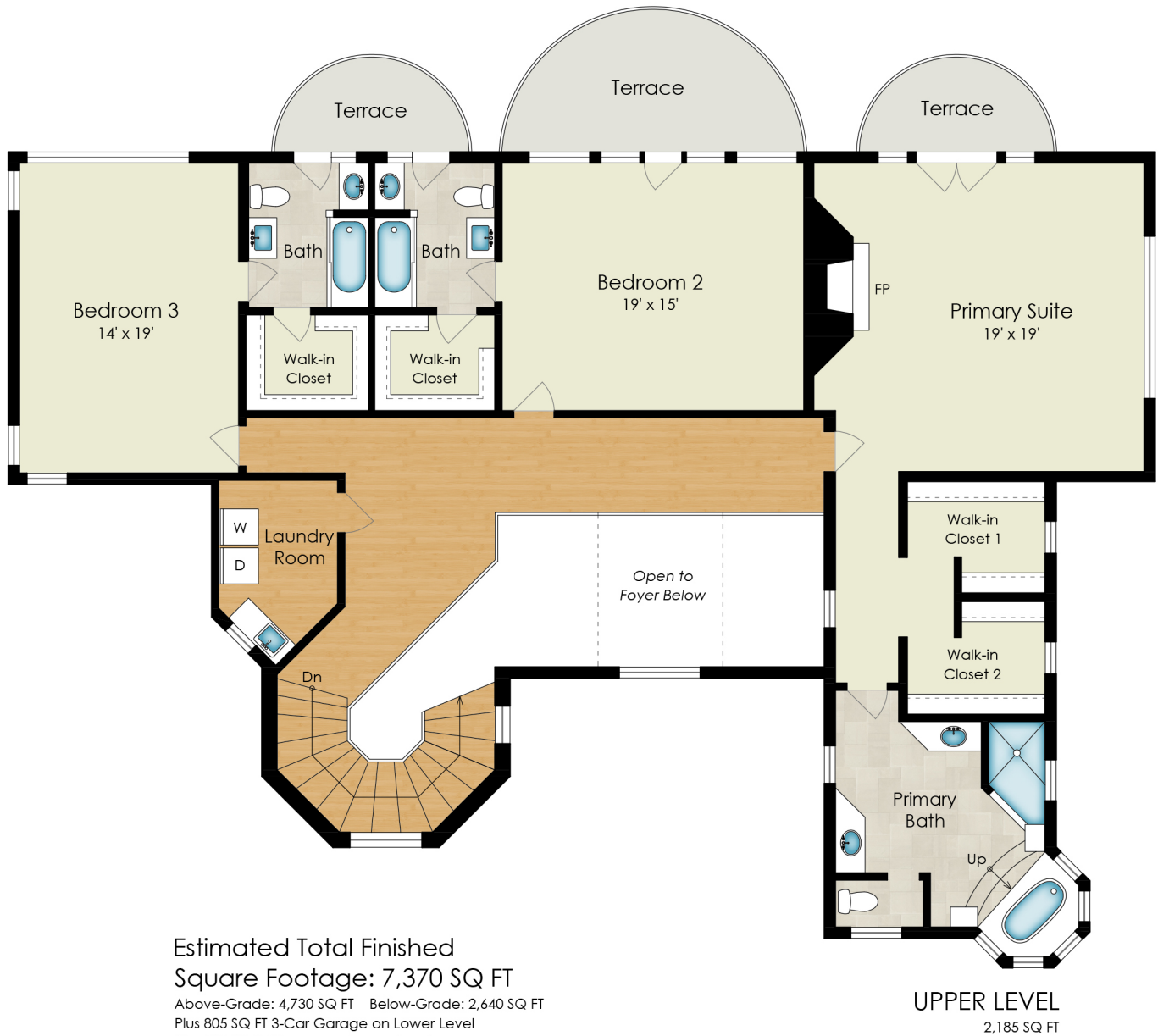


MAIN LEVEL
2,545 SQ FT



4 PARK PLACE

TIBURON, CA 94920



Estimated Total Finished
Square Footage: 7,370 SQ FT

Above-Grade: 4,730 SQ FT Below-Grade: 2,640 SQ FT

Plus 805 SQ FT 3-Car Garage on Lower Level

Plus 125 SQ FT Storage on Lower Level

Calculated per ANSI Standard Z765-2003.

* Estimated Total Finished & Unfinished Square Footage: 8,300 SQ FT



4 PARK PLACE

TIBURON, CA 94920

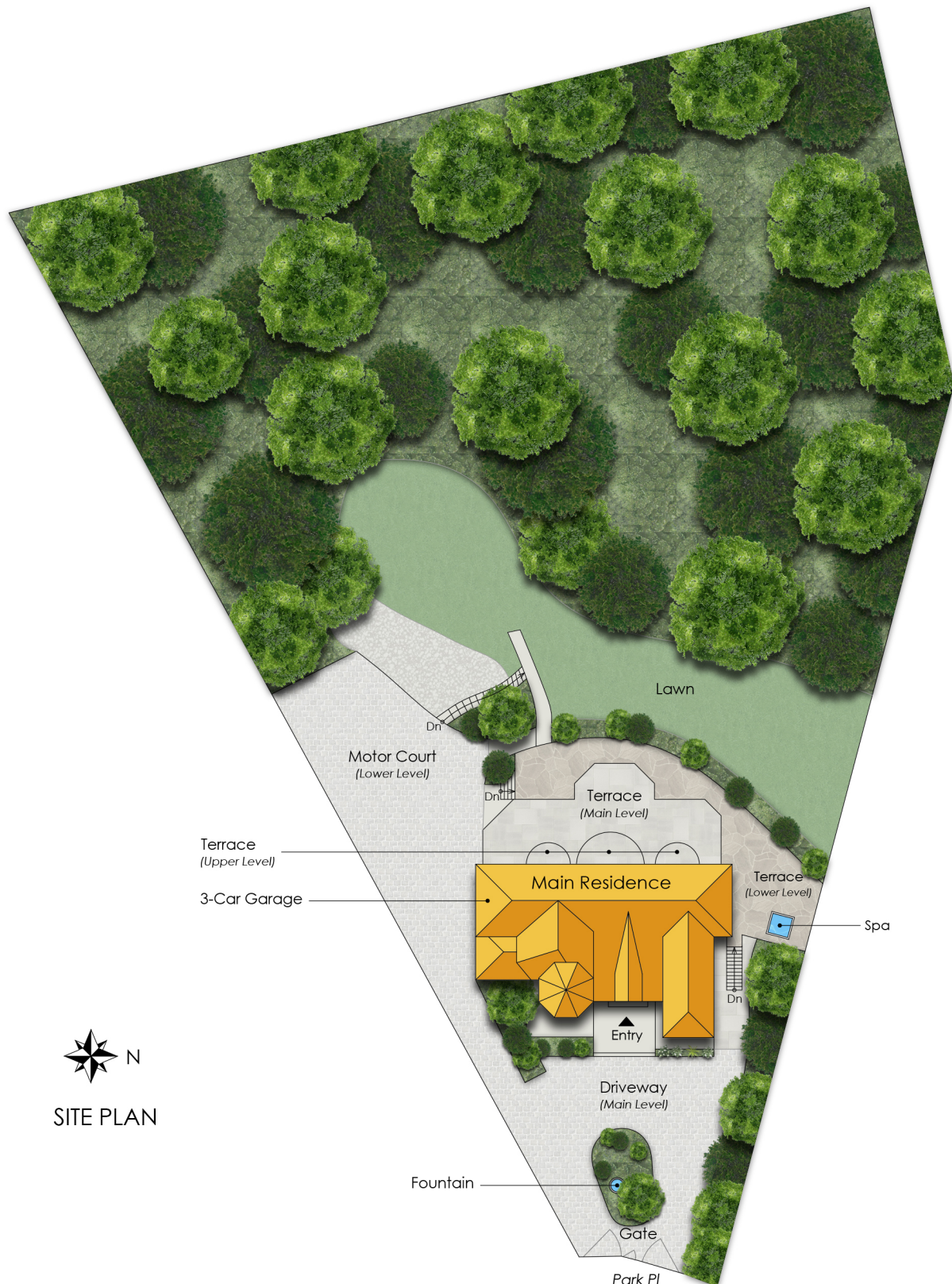


LOWER LEVEL
2,640 SQ FT



4 PARK PLACE

TIBURON, CA 94920



 N
SITE PLAN