

69 SOUTH KNOLL ROAD

MILL VALLEY, CA 94941



SITE PLAN



69 SOUTH KNOLL ROAD

MILL VALLEY, CA 94941

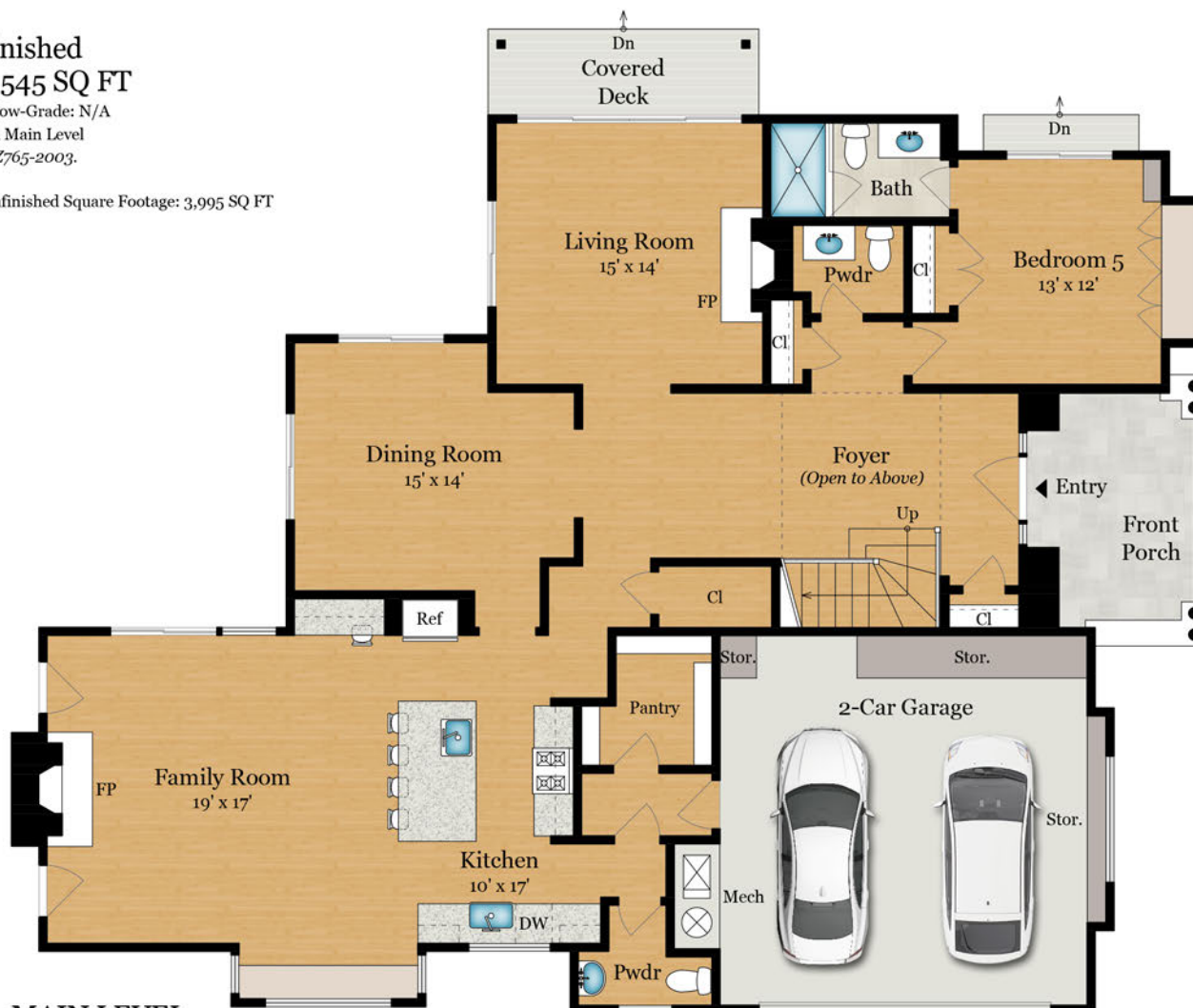
Estimated Total Finished
Square Footage: 3,545 SQ FT

Above-Grade: 3,545 SQ FT Below-Grade: N/A

Plus 450 SQ FT 2-Car Garage on Main Level

Calculated per ANSI Standard Z765-2003.

* Estimated Total Finished & Unfinished Square Footage: 3,995 SQ FT



MAIN LEVEL
1,820 SQ FT



69 SOUTH KNOLL ROAD

MILL VALLEY, CA 94941



UPPER LEVEL
1,725 SQ FT

