

5070 PARADISE DRIVE

TIBURON, CA 94920

Estimated Total Finished
Square Footage: 5,415 SQ FT

Above-Grade: 1,145 SQ FT Below-Grade: 4,270 SQ FT
Plus 675 SQ FT 3-Car Garage on Upper Level
Plus 115 SQ FT Storage on Lower Level 2
Calculated per ANSI Standard Z765-2003.

* Estimated Total Finished & Unfinished Square Footage: 6,205 SQ FT



MAIN LEVEL
3,060 SQ FT

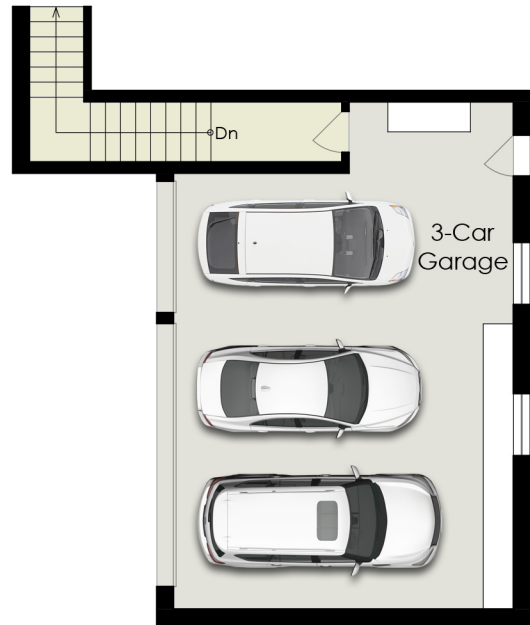


5070 PARADISE DRIVE

TIBURON, CA 94920



UPPER LEVEL
1,020 SQ FT



UPPER LEVEL
125 SQ FT - Finished
675 SQ FT - Unfinished



LOWER LEVEL 1
1,185 SQ FT

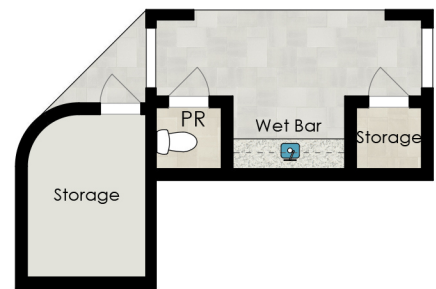


5070 PARADISE DRIVE

TIBURON, CA 94920



SITE PLAN



EXTERIOR

25 SQ FT - Finished
115 SQ FT - Unfinished