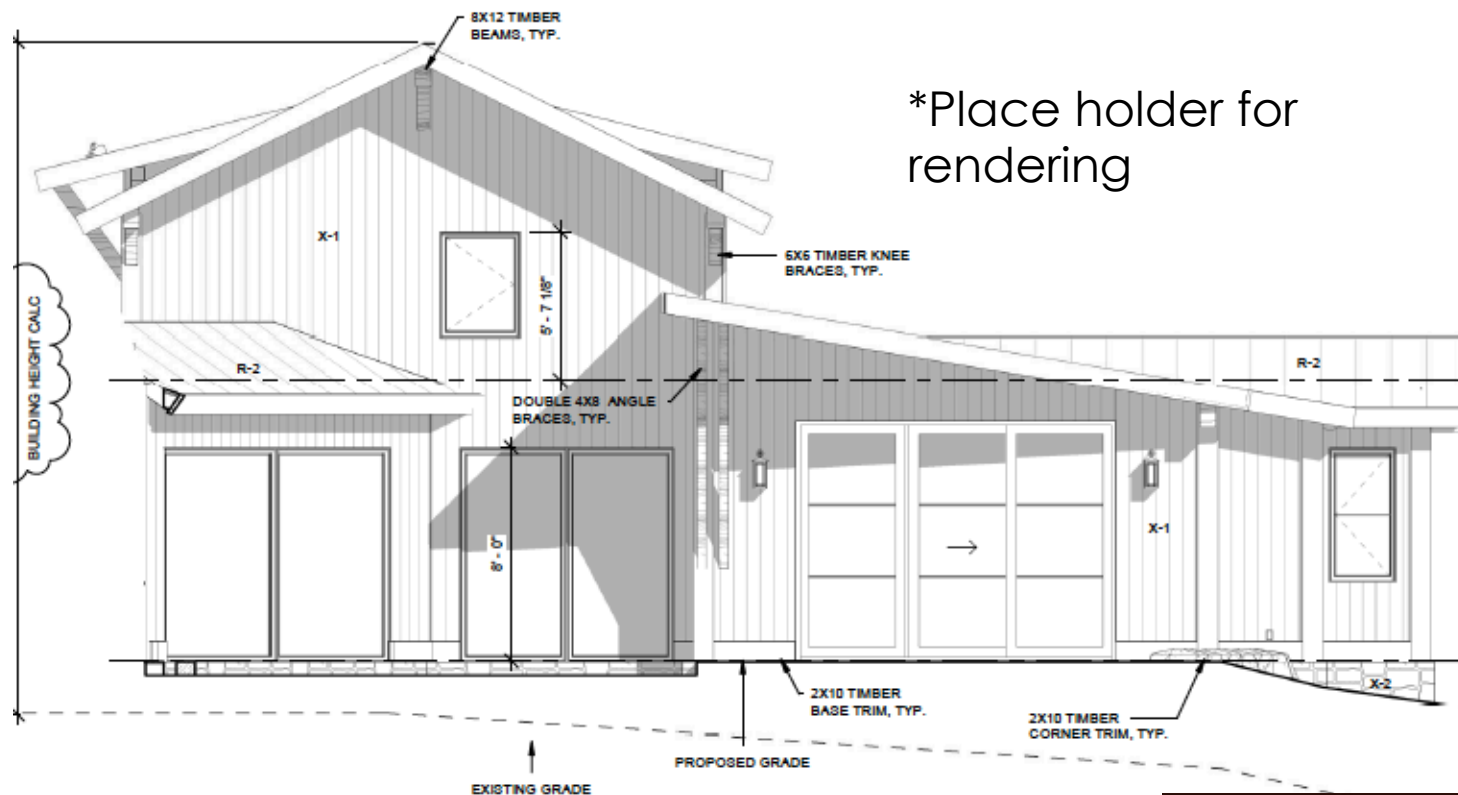
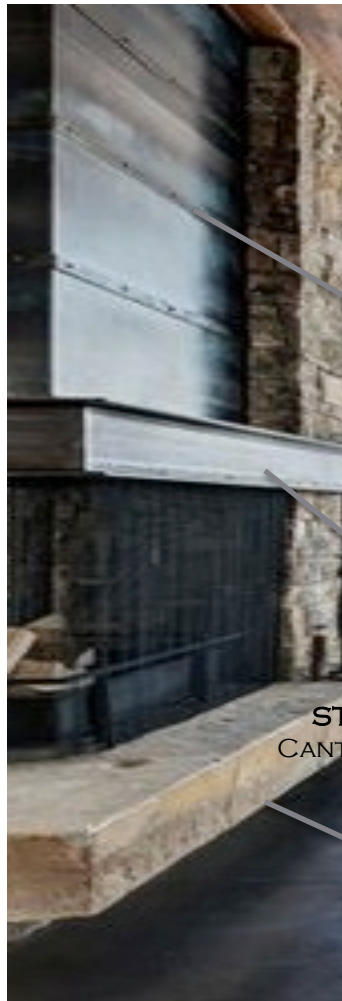


786 ASPEN BLUFF LANE
INTERIOR FINISHES &
DESIGN MANUAL

*Place holder for
rendering

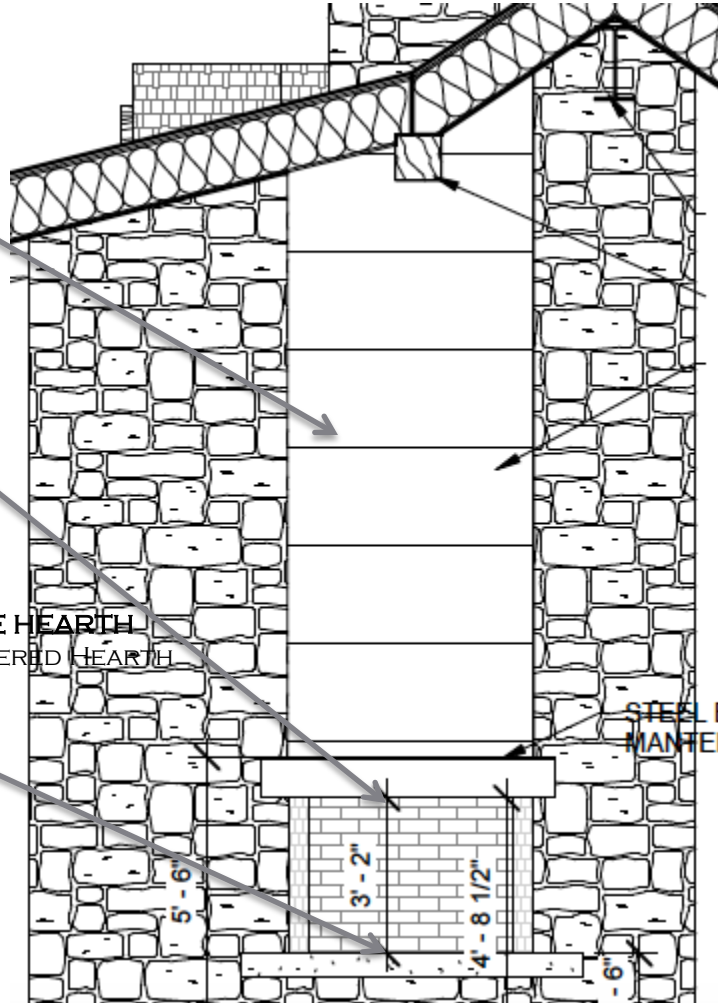


ENTRY/GREAT ROOM FINISHES



STONE HEARTH
CANTILEVERED HEARTH

STEEL MANTLE
CUSTOM MANTLE
STEEL — AROUND FIRE PLACE



STONE SELECTION
CUSTOM MIX OKLAHOMA BROWNS



WOOD FLOORING
WIDE PLANKED OAK

KITCHEN DETAILS – CABINET SELECTIONS



KITCHEN – PLUMBING & APPLIANCES



KITCHEN SINK
44" KOHLER PROLIFIC
STAINLESS STEEL



SINK FAUCET
DELTA DST
NICKEL FINISH



48" RANGE TOP
WOLF – STAINLESS STEEL



30" DOUBLE OVEN
WOLF – STAINLESS STEEL



30" PANTRY REFRIGERATOR
BOSCH- PANELED



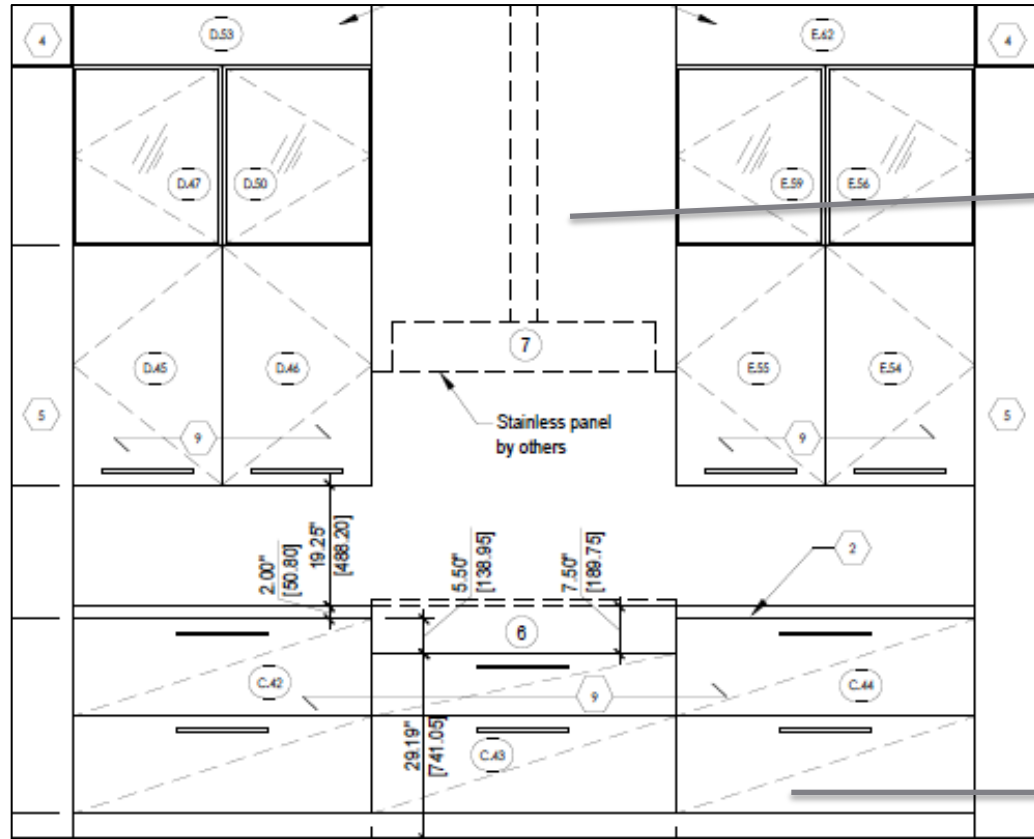
36" KITCHEN REFRIGERATOR
SUB-ZERO - PANELED



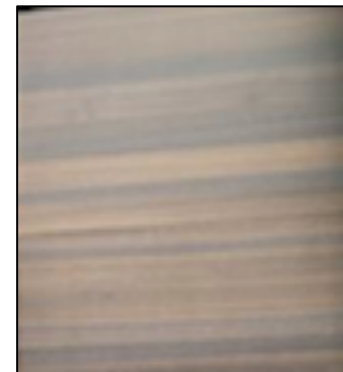
24" DISHWASHER
ASKO - PANELED

KITCHEN – FLOOR PLANS & ELEVATIONS

KITCHEN ELEVATION



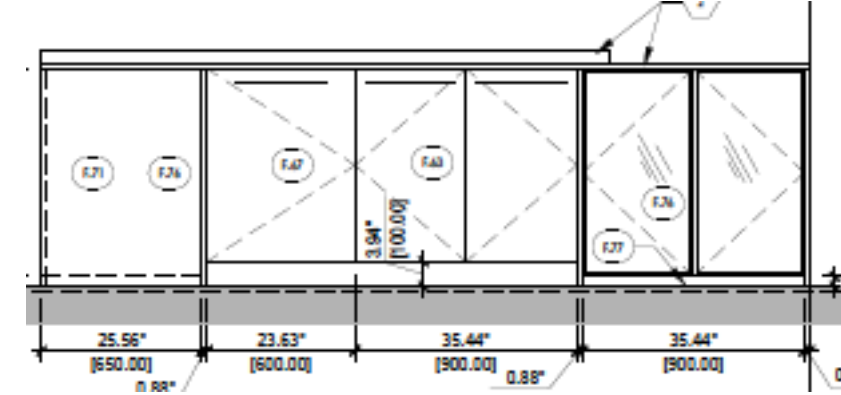
CUSTOM HOOD
CONCEPT PICTURE



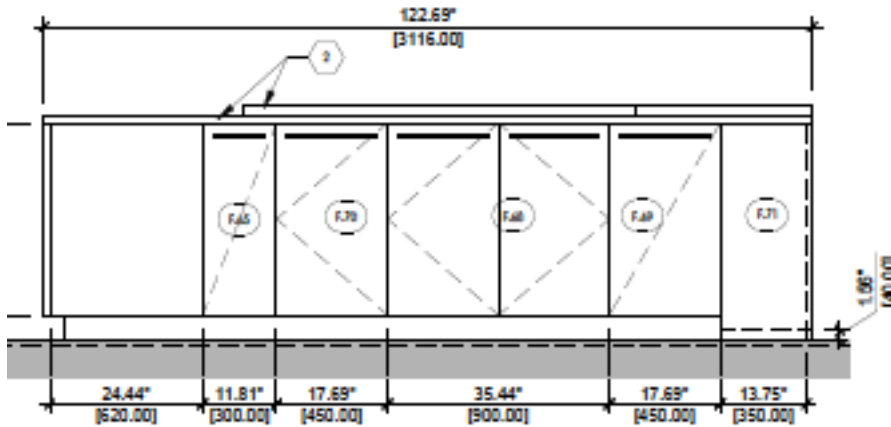
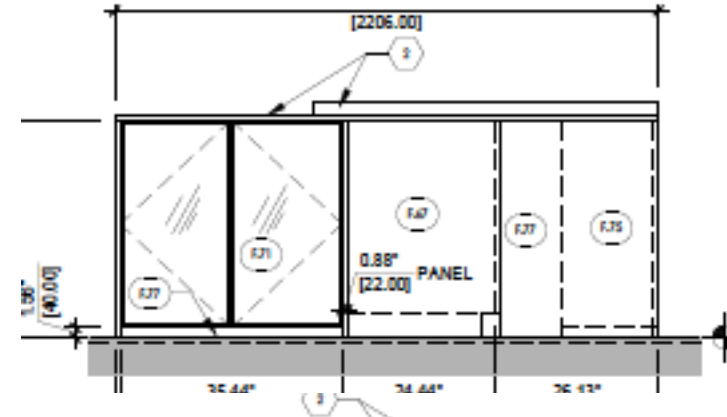
CABINET
CESAR
"EUCALIPTO MAX"

ISLAND – ELEVATIONS

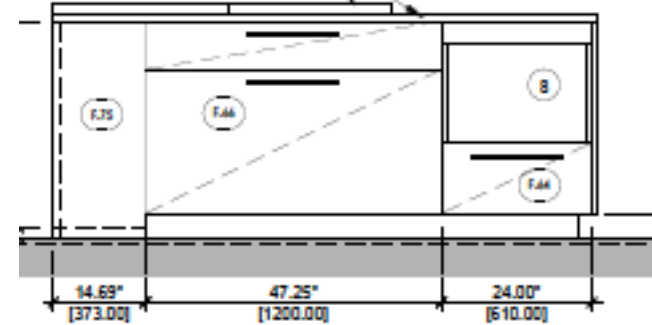
ISLAND PERSPECTIVE FROM GREAT ROOM



ISLAND PERSEPECTIVE FROM DINING ROOM



ISLAND PERSPECTIVE FROM RANGE



ISLAND PERSPECTIVE FROM KITCHEN SINK VIEW

CABINET
CUSTOM VERTICAL GRAIN
WHITE OAK

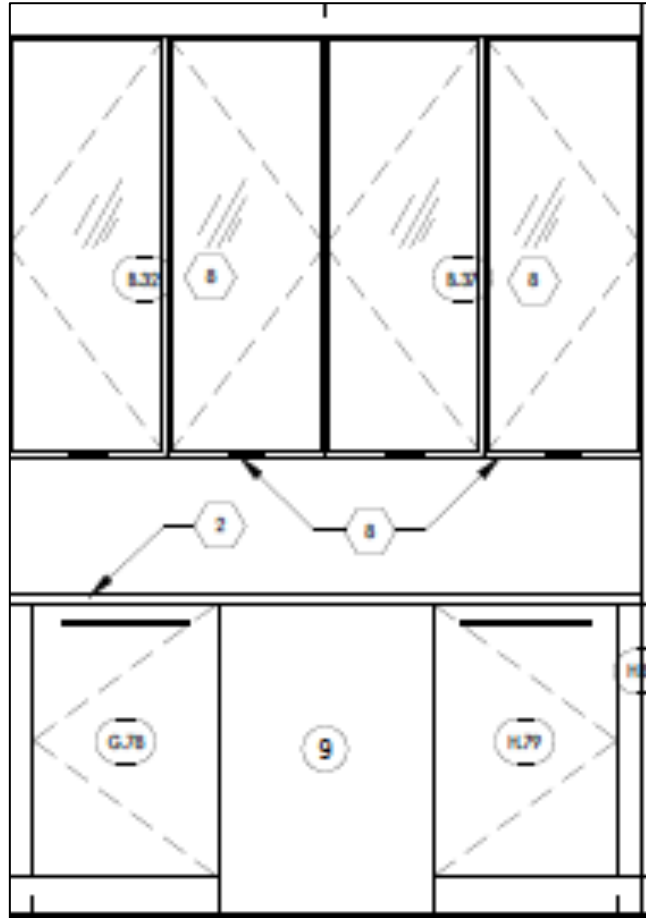
BAR – ELEVATIONS



BEVERAGE CENTER
MARVEL
24"



SINK FAUCET
DELTA
STAINLESS STEEL

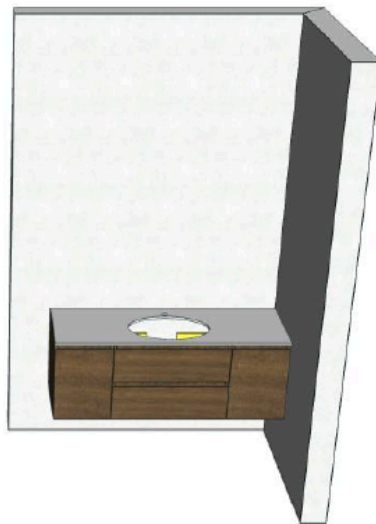
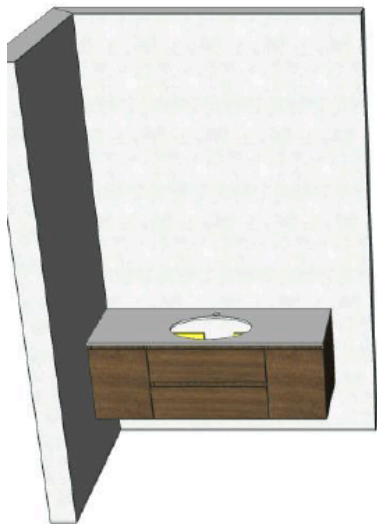


PREP SINK
NATIVE TRAILS
UNDER MOUNT SINK



WOOD FLOORING
CUSTOM STAINED
WIDE PLANK OAK

MASTER BATH – PLUMBING



BATH TUB
MTI ELYSE 63"



HANS GROHE
BRUSHED NICKEL FINISH



TUB FILLER
HANS GROHE
BRUSHED NICKEL FINISH



SHOWER VALVES
HANS GROHE –
BRUSHED NICKEL FINISH



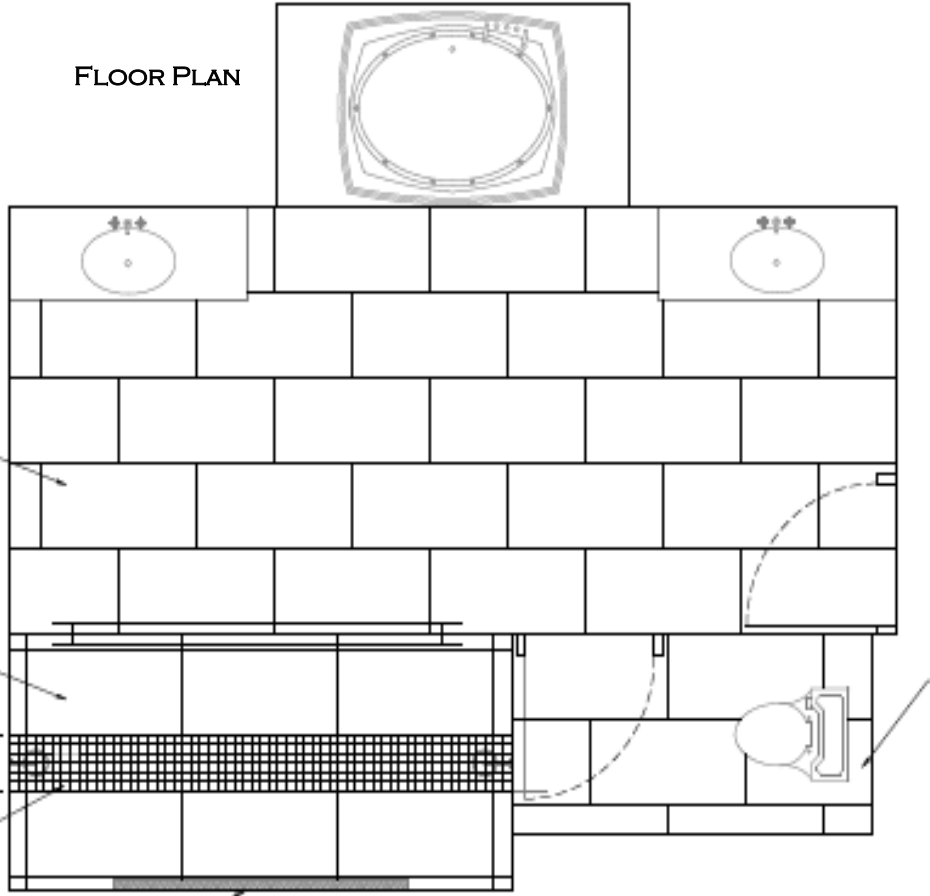
SHOWER HEADS
HANS GROHE
BRUSHED NICKEL FINISH



SINKS
MTI – BOTIQUE COLLECTION
WHITE FINISH

MASTER BATH – FINISHES

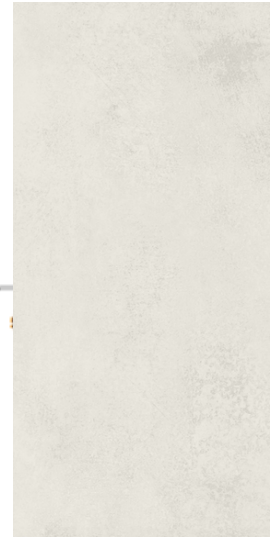
FLOOR PLAN



FEATURE WALL TILE
PORCELENOSA
13x40



**CABINET
COMPAB**
"ROVERE THERMO"



SHOWER WALL TILE
ELYSIUM
12x24



FLOOR TILE
SOHO
18x36

GUEST SUITE BATH – PLUMBING



VANITY ELEVATION



TOILET
KOHLER
WHITE FINISH



SHOWER
HANSGROHE
CHROME FINISH



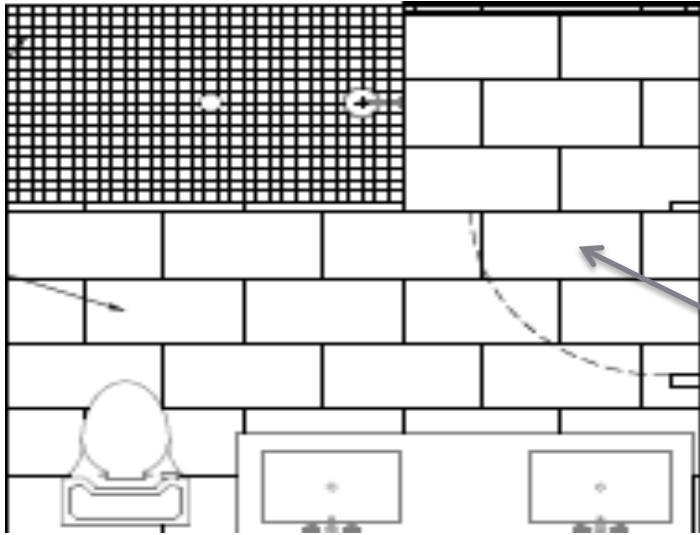
FAUCETS
HANSGROHE
BRUSHED NICKEL FINISH



CABINET
COMPAB
ROVERE THERMO

GUEST SUITE BATH— ELEVATION & FINISHES

FLOOR PLAN



FLOOR/WALLTILE
TRAVERTINI
GRIGIO AL CONTRO
SIZE VARIES

VANITY ELEVATION



SHOWER WALL TILE
ELYSIUM
12x24

GUEST 3 & 4 BATH – PLUMBING & TILE



VANITY
INTEGRATED SINK
WHITE FINISH



CABINET
COMPABE
TIVOLI



SHOWER TRIMS
HANS GROHER
BRUSHED NICKEL FINISH

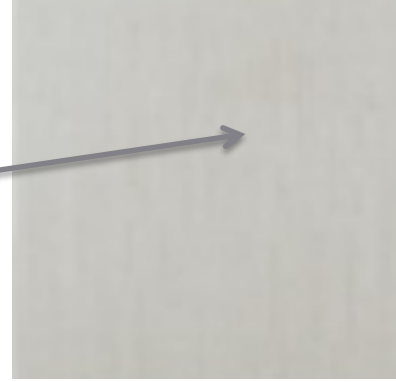
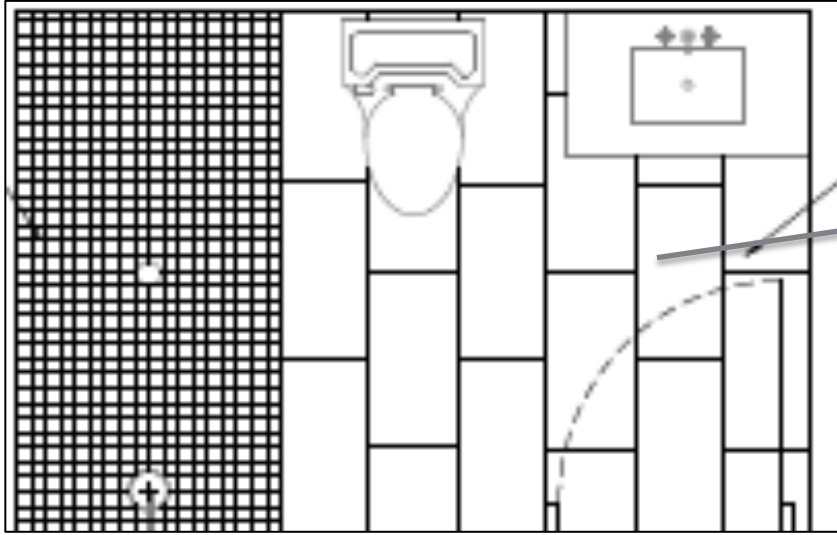


FAUCETS
HANS GROHE – PURIST
BRUSHED NICKEL FINISH

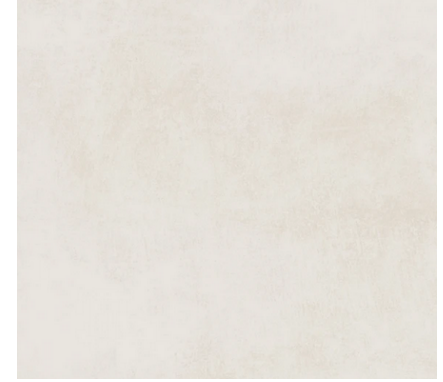


TOILET
KOHLER
WHITE FINISH

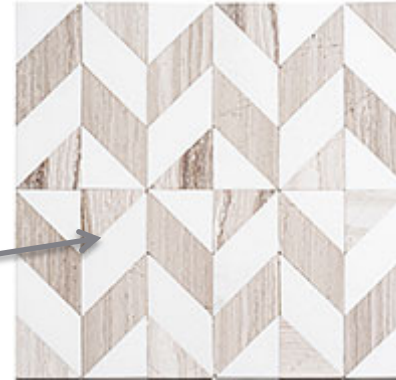
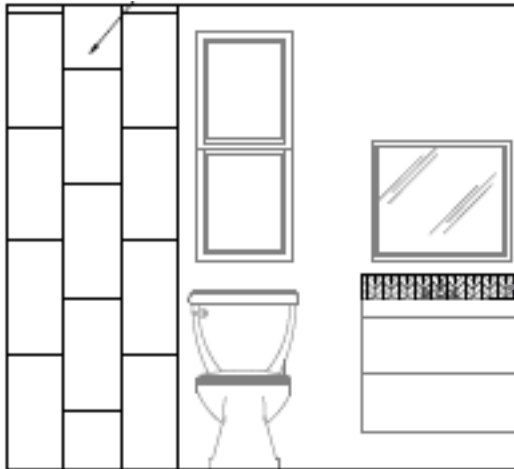
GUEST 3 & 4 BATH – PLUMBING & TILE



FLOOR/BACK WAL OF SHOWER
DALORES BLANCO
12x24



SHOWER WALLS
CITIZEN ELECTOR
12x24



BACKSPLASH
GLAZIO MOSIAC

LAUNDRY ROOM



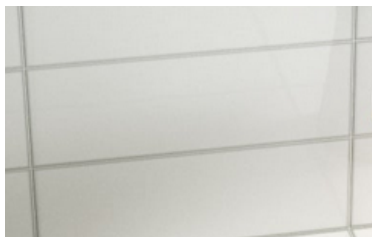
WASHER/DRYER
MAYTAG
WHITE



SINK
BLANCO
WHITE



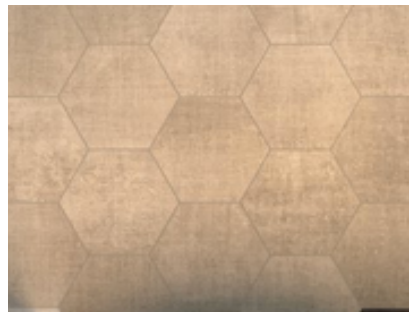
FAUCET
SIGNATURE HARDWARE
STAINLESS STEEL



BACKSPLASH
VERI/VILLA GROVE
4 x 12



CABINET
ARREX
FRASINO BRANELIA



FLOOR
HEXTILE TEXTURED
8 x 10

POWDER ROOM(S) DETAILS

EXERCISE POWDER ROOM



FACUET
BRIZO
MATTE BLACK



SINK
NATIVE TRAILS
VESSEL

MUDROOM POWDER ROOM



FAUCET
KOHLER
MATTE BLACK



SINK
NATIVE TRAILS
UNDERMOUNT

DOOR & TRIM DETAILS



INTERIOR DOORS
BARAUSSE
FINSISH AWONG



FRONT DOOR
STEEL AND ANTIQUE WOOD
4' WIDE PIVOT HINGE
3' SIDELITES



DOOR HARDWARE
ROBOCINQUE
MATT GRAPHITE

FINSHES THROUGHOUT HOME



WINDOWS
DRYWALL RETURN
BLACK WINDOWS



TIMBERS
200 YEAR OLD RECLAIMED TIMBERS

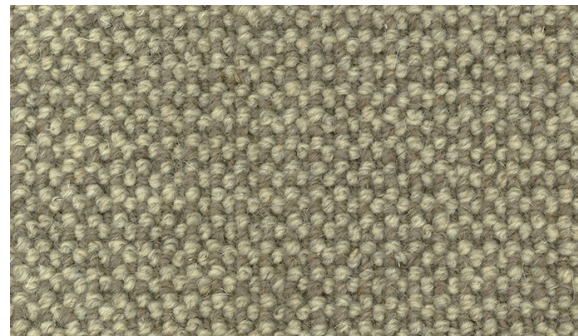


EXPOSED STEEL
BEAMS EXPOSED THROUGHOUT



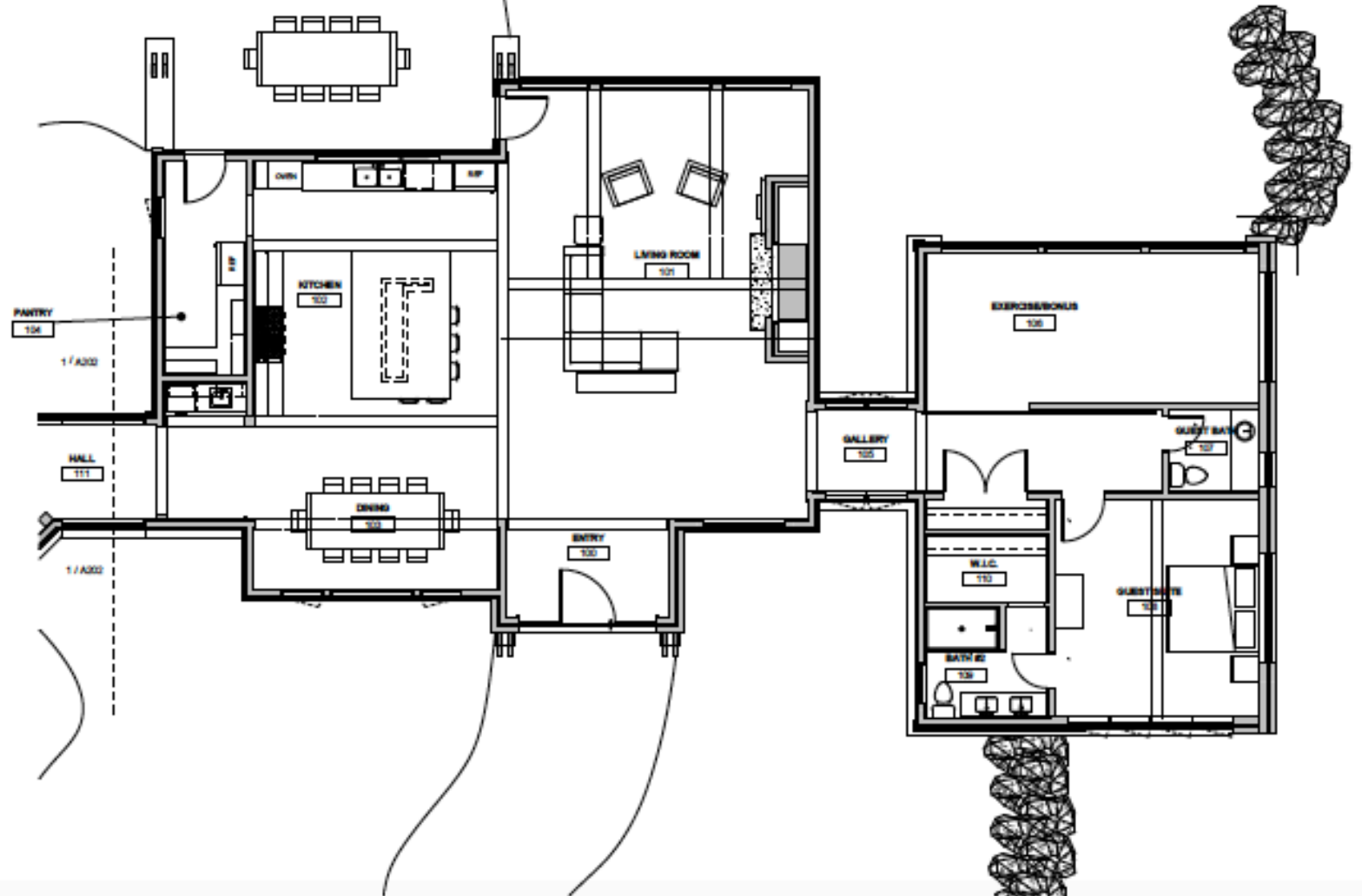
China White OC-141

WALL COLOR

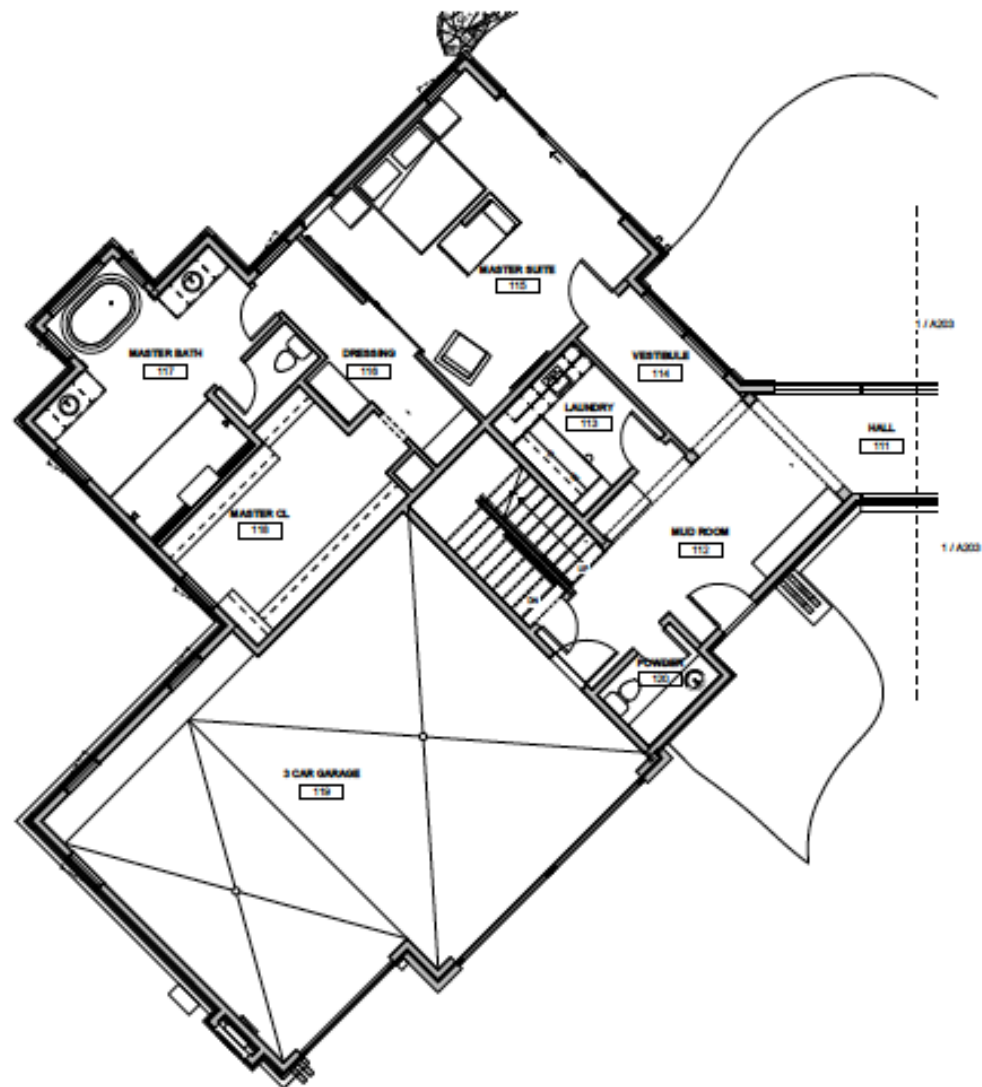


CARPET
100% WOOL

MAIN LEVEL FLOOR PLAN



MASTER WING FLOOR PLAN



UPPER LEVEL FLOOR PLAN



786 ASPEN BLUFF LANE
INTERIOR FINISH & DESIGN MANUAL

PLEASE NOTE:

THIS DESIGN MANUAL IS PROVIDED FOR ILLUSTRATIVE AND SELECTION PURPOSES ONLY.

THE PHOTOS INCLUDED IN THIS FINISH MANUAL ARE STRICTLY FOR REPRESENTATION OF THE MATERIALS. SHADING AND COLOR VARIATIONS IS AN INHERENT CHARACTERISTIC OF NATURAL PRODUCTS SUCH AS STONE AND WOOD. ACTUAL SAMPLES OF THE PHOTOGRAPHED MATERIALS CAN BE VIEWED UPON REQUEST. PRODUCTS ARE SUBJECT TO CHANGE WITHOUT NOTICE AND THE DEVELOPER MAY REPLACE ANY PRODUCT WITH A COMPARABLE PRODUCT OF SIMILAR QUALITY AND DESIGN.

