



22 EUCALYPTUS ROAD

BELVEDERE, CA 94920

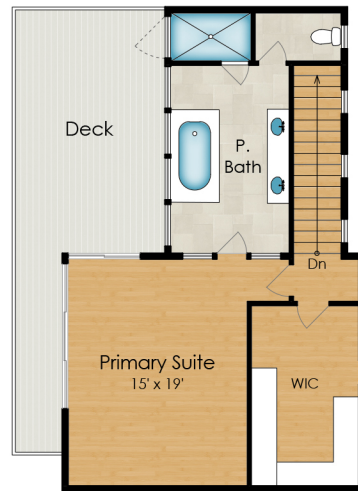
Partial Lot Shown





22 EUCALYPTUS ROAD

BELVEDERE, CA 94920



MAIN RESIDENCE
UPPER LEVEL
795 SQ FT



GUEST SUITE
(BELOW GARAGE)
315 SQ FT

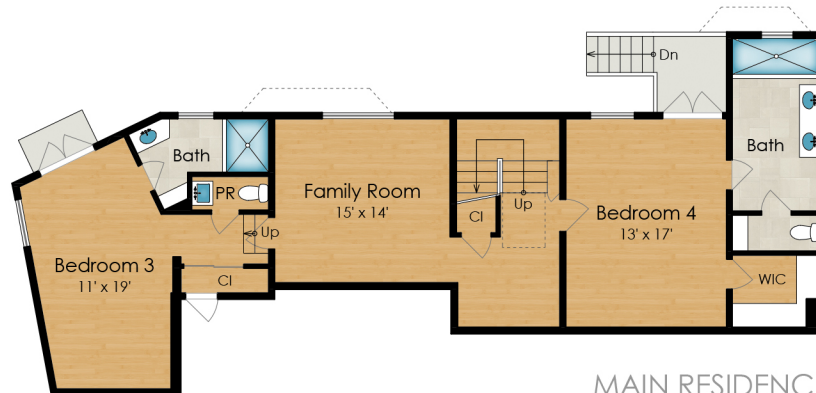
Estimated Total Finished Square Footage: 4,480 SQ FT

Above-Grade: 3,270 SQ FT Below-Grade: 1,210 SQ FT

- Main Residence: 4,165 SQ FT
Main Level: 2,160 SQ FT
Upper Level: 795 SQ FT
Lower Level: 1,210 SQ FT
- Guest Suite: 315 SQ FT

Plus 485 SQ FT Detached 2-Car Garage
Calculated per ANSI Standard Z765-2021.

* Estimated Total Finished & Unfinished
Square Footage: 4,965 SQ FT



MAIN RESIDENCE
LOWER LEVEL
1,210 SQ FT

22 EUCALYPTUS ROAD

BELVEDERE, CA 94920

SITE PLAN

