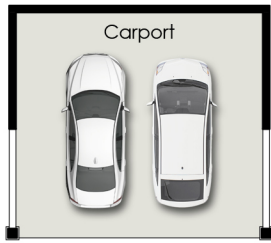


5 PALMER COURT

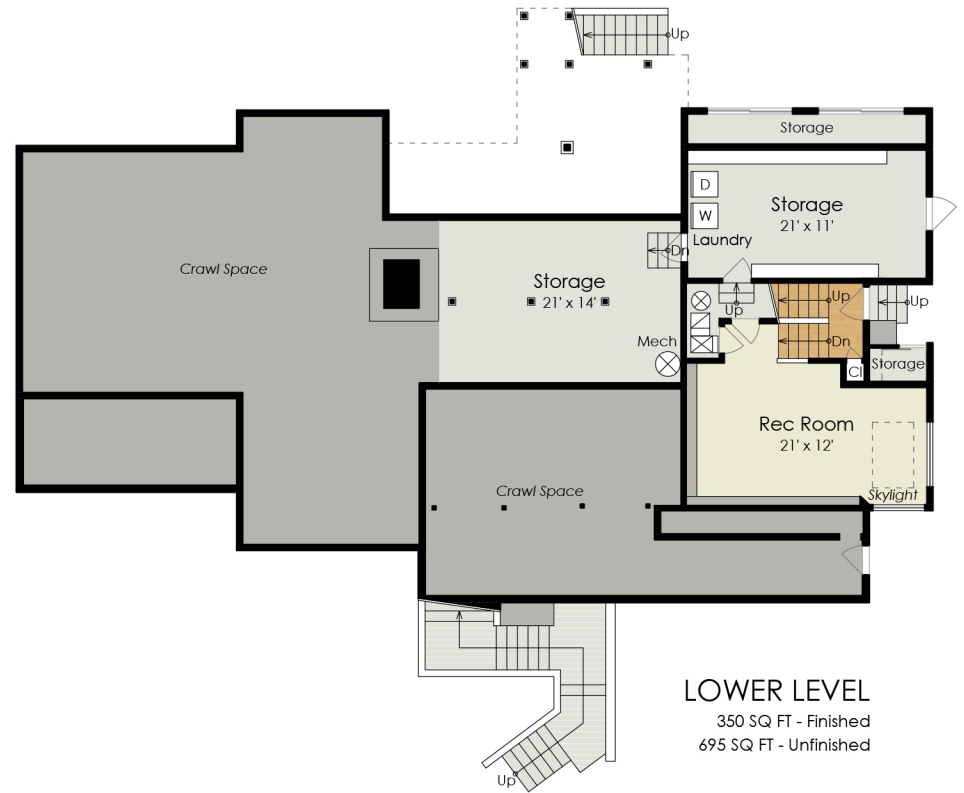
TIBURON, CA 94920



CARPORT



MAIN LEVEL
2,220 SQ FT



LOWER LEVEL
350 SQ FT - Finished
695 SQ FT - Unfinished

Estimated Total Finished
Square Footage: 2,570 SQ FT

Above-Grade: 2,570 SQ FT Below-Grade: N/A

Plus 695 SQ FT Storage on Lower Level

Calculated per ANSI Standard Z765-2003.

* Estimated Total Finished & Unfinished Square Footage: 3,265 SQ FT



5 PALMER COURT

TIBURON, CA 94920



SITE PLAN

