

Flat Point Single Family

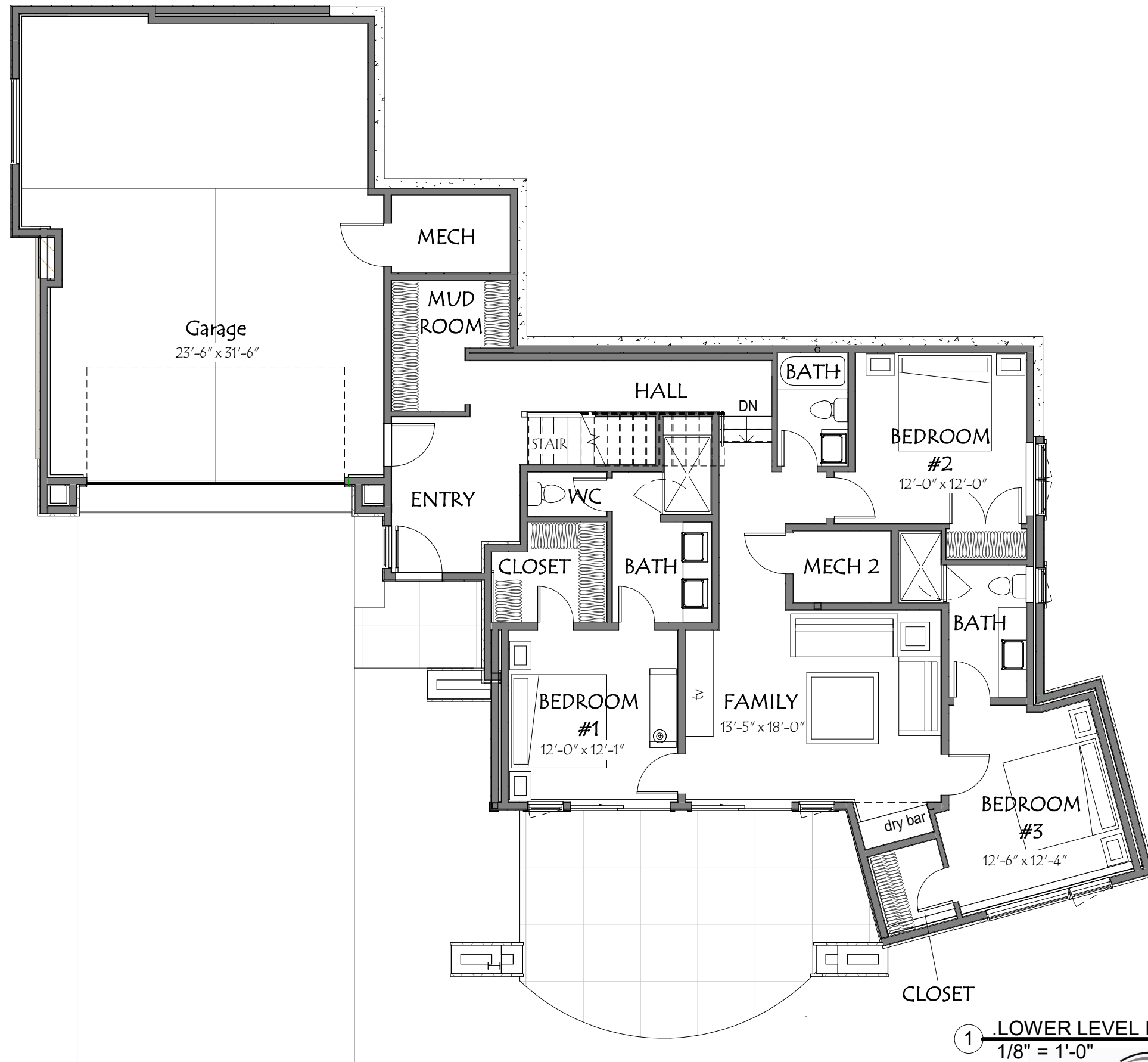
4561 Flat Point
Avon Colorado, 81620

① MAIN LEVEL FLOOR PLAN
1/8" = 1'-0"

MARTIN MANLEY
ARCHITECTS

970.328.5151 Vail Valley, Colorado

PO Box 1587, Eagle, CO 81631
www.martinmanleyarchitects.com



Flat Point Single Family

4561 Flat Point
Avon Colorado, 81620

1 LOWER LEVEL FLOOR PLAN
1/8" = 1'-0"

MARTIN MANLEY
ARCHITECTS

970.328.5151 Vail Valley, Colorado

PO Box 1587, Eagle, CO 81631
www.martinmanleyarchitects.com