

STYLISH CONDOMINIUM IN A PREMIER HIGH RISE



ADDRESS: 999 Green # 904
PRICE: \$2,200,000

Located in The Summit, a luxurious full-service high-rise building on a wonderful Russian Hill cul-de-sac, this sophisticated two bedroom, two bath home offers comfortable, elegant living. The sunny southeast exposure features views of the Bay, Bay Bridge, enchanting gardens, tiled rooftops and the cobblestone alley of Russian Hill Place. A private balcony is accessed from all rooms via the sliding floor-to-ceiling windows.

Recently renovated with wide plank wood floors throughout, the home enjoys a contemporary, spacious open living area. The renovated kitchen features a large center island with honed granite counter tops, Viking stovetop and double ovens, an abundance of cabinets, wine refrigerator and is the perfect hub for entertaining.

Enjoy City views from the large master suite with walk-in closet and sumptuous bath with soaking tub and shower stall. The guest room features a bifold door to the living room for a more expansive view. The remodeled guest bath completes the floor plan. There is an in-unit washer and dryer and an abundance of closet space.

HOA assessments of \$1684.00 per month include 24-hour door persons, on-site management, professional management, radiant heat, water, garbage, building maintenance, insurance and reserves. Parking for one car (#43), a storage room (#33) and additional locker storage above the parking space are in the garage.

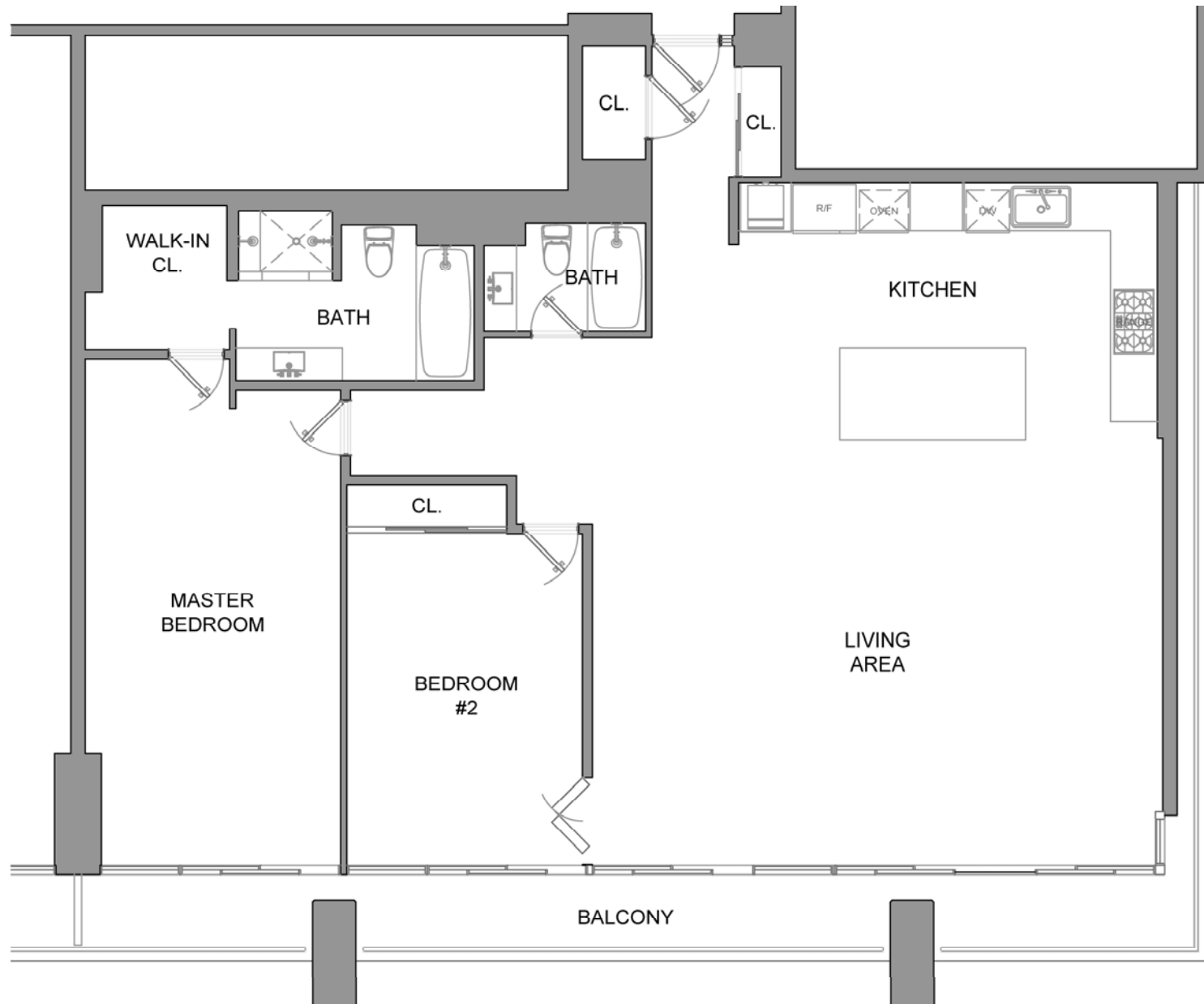
The Summit is a full-service building located at the top of Russian Hill in a highly desirable neighborhood with easy access to Downtown and the Financial District, as well as the trendy shops and restaurants of North Beach, Hyde Street and Polk Gulch.

Preview this property at: www.999Green904.com

Betty Brachman
415.296.2215
DRE # 00671304
betty@thebrachmangroup.com

Sotheby's
INTERNATIONAL REALTY

Alexis Coddington
415.296.2216
DRE# 01181606
alexis@thebrachmangroup.com



999 Green #904

Schematic floor plan not drawn to scale and is only an approximation.