

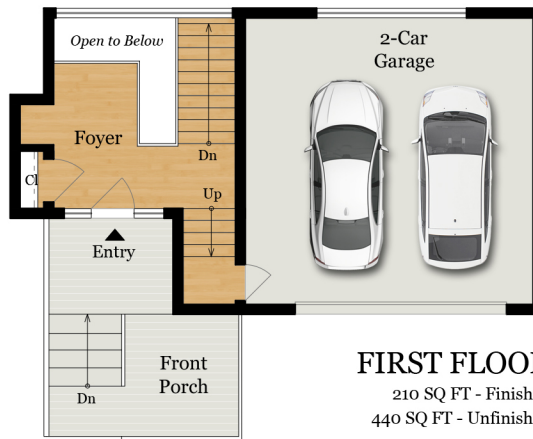
# 4121 PARADISE DRIVE

TIBURON, CA 94920

**Estimated Total Finished  
Square Footage: 4,015 SQ FT**

Above-Grade: 210 SQ FT Below-Grade: 3,805 SQ FT  
Plus 440 SQ FT 2-Car Garage on First Floor  
Calculated per ANSI Standard Z765-2003.

\* Estimated Total Finished & Unfinished  
Square Footage: 4,455 SQ FT



## FIRST FLOOR

210 SQ FT - Finished  
440 SQ FT - Unfinished

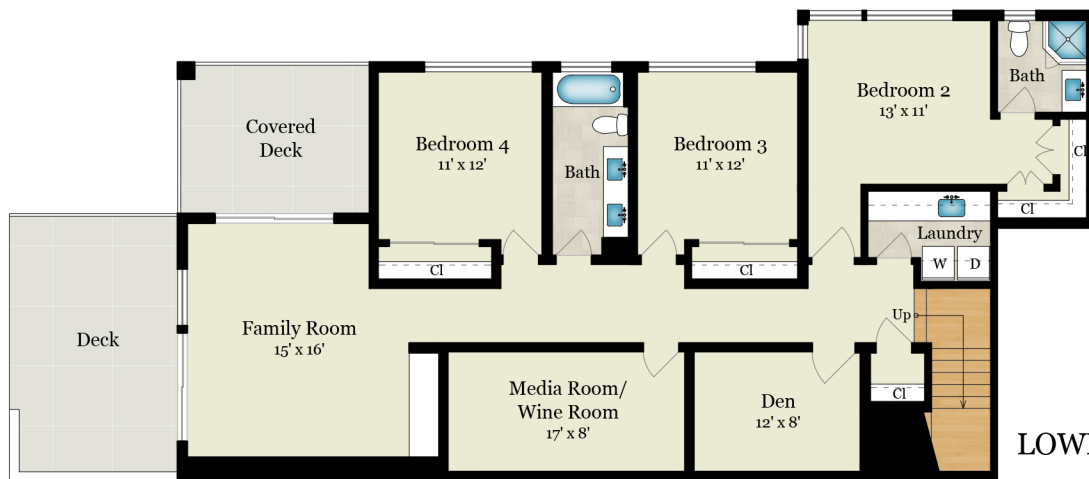
PACIFIC  
UNION  
INTERNATIONAL

**Z**  
ZEPHYR  
REAL ESTATE



## LOWER LEVEL 1

2,135 SQ FT



## LOWER LEVEL 2

1,670 SQ FT

Rendering by Floor Plan Visuals.  
All measurements are approximate. While deemed reliable, no information  
on these floor plans should be relied upon without independent verification.

Shana Rohde-Lynch, Pacific Union International  
Tel: 415.789.9999  
Email: Shana@pacunion.com

Rick Stern, Zephyr Real Estate  
Tel: 415.515.3126  
Email: rickstern@pacbell.net



# 4121 PARADISE DRIVE

TIBURON, CA 94920



SITE PLAN

