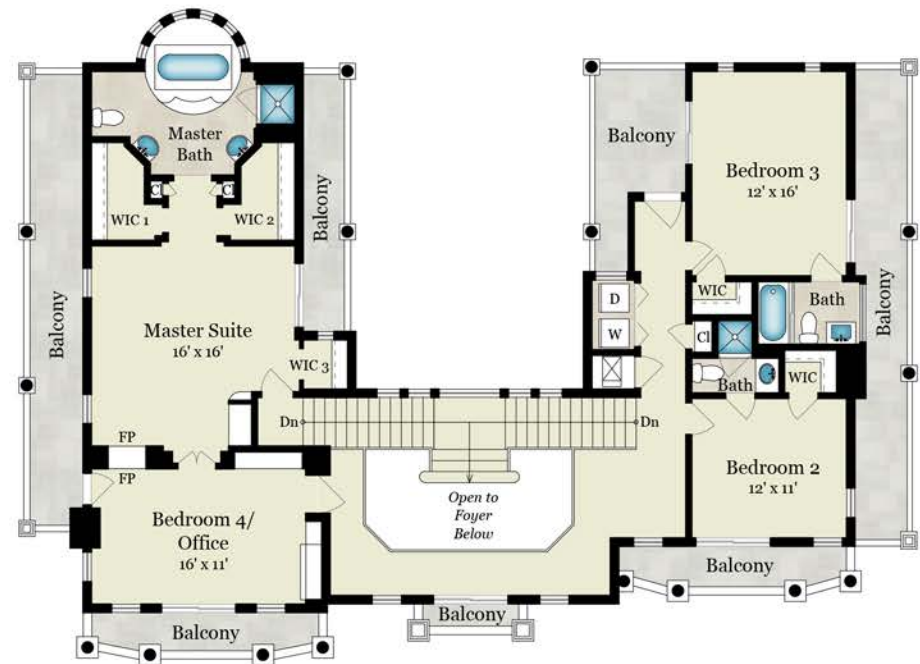


3 HERON DRIVE

MILL VALLEY, CA 94941



Estimated Total Finished Square Footage: 3,390 SQ FT

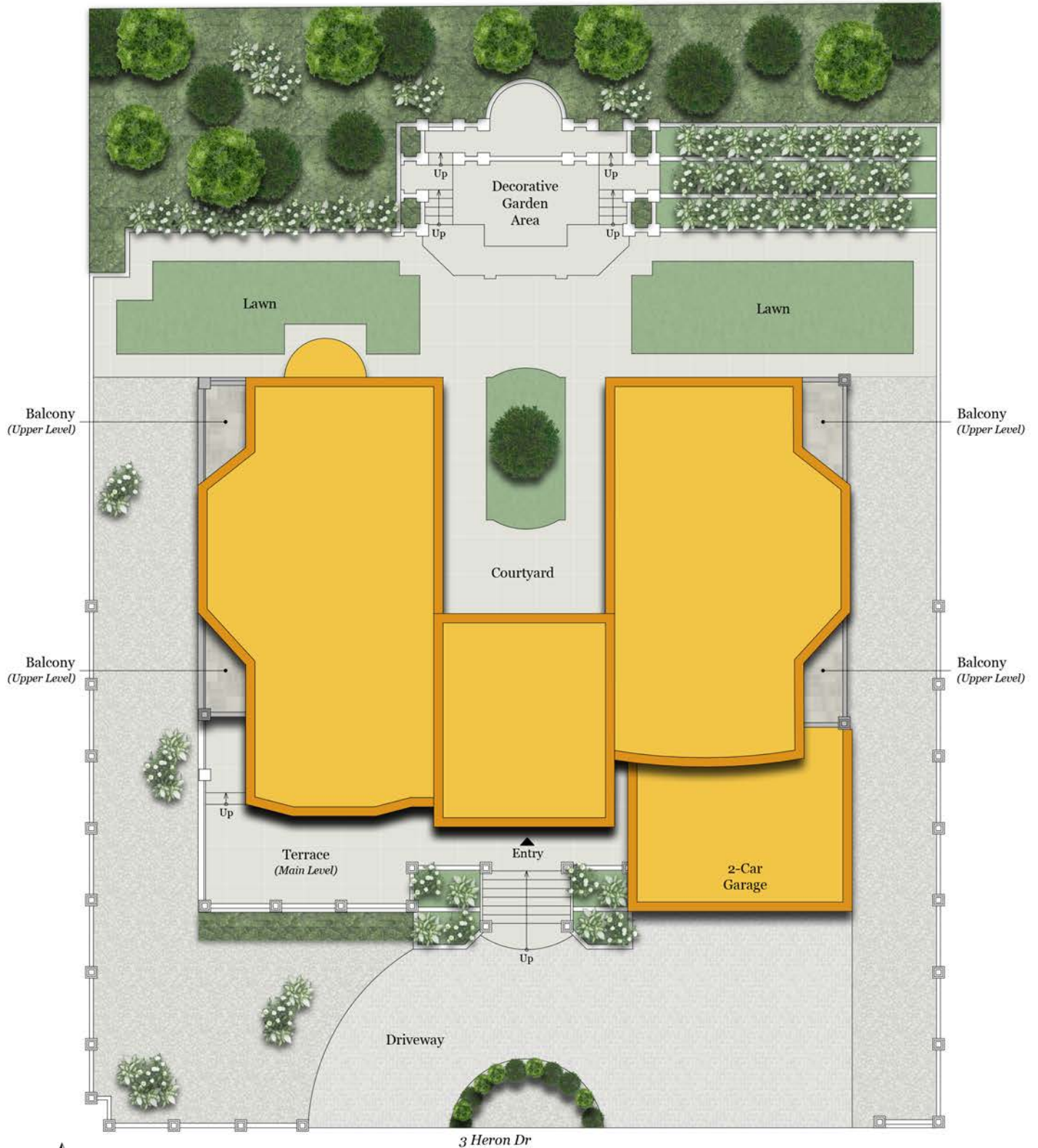
Above-Grade: 3,390 SQ FT Below-Grade: N/A
Plus 500 SQ FT 2-Car Garage on Main Level
Plus 30 SQ FT Mech Room on Main Level
Plus 10 SQ FT Mech Room on Upper Level
Calculated per ANSI Standard Z765-2003.

*Estimated Total Finished & Unfinished Square Footage: 3,930 SQ FT



3 HERON DRIVE

MILL VALLEY, CA 94941



SITE PLAN

Rendering by Floor Plan Visuals.
All measurements are approximate. While deemed reliable, no information on these floor plans should be relied upon without independent verification.

Presented by Jim Fraser, Pacific Union | Christie's International Real Estate
Tel: 415.254.0253
Email: JimFraser@MarinIsMyHome.com